



Guild of
Architectural
Ironmongers

Specifier's
Resource
Book 2022



FD30 Residential apartment entrance fire doorsets

For internal and external application

Product and Factory Production accredited by independent third parties.



Application

Offering flexible and secure production capacity to support reactive maintenance or large contracts.

Performance

Dual certification - fire and security.
30 minute fire resistance performance and smoke tested.
Secured by Design accredited and certified to PAS24.

Validation

Transparency and access to summary test evidence and certification.

Installation

Certification and installation documentation supports legal duties to retain construction and fire safety information.



REACTIVE MAINTENANCE



REFURBISHMENT PROJECTS



NEW BUILD



For more details on our product range please visit:

www.masonite.co.uk/firedoorsets

T: 01623 446336 E: sales@door-stop.co.uk



Part of the Masonite Group

Specifier's Resource Book 2022

The Guild of Architectural Ironmongers (GAI) is the only trade body in the UK that represents the interests of the whole architectural ironmongery industry - architectural ironmongers, wholesalers and manufacturers.

Formed in 1961, the GAI is internationally recognised and respected as the authority on architectural hardware, building its reputation on three key pillars; education, technical support and community.

The GAI is committed to supporting its membership with a vast array of networking, learning and development opportunities, whilst providing a voice for the industry at local, national and international levels.

The GAI Specifier's Resource Book 2022 is a celebration of excellence, design and best practice in architectural ironmongery, and the important role our members play in the construction industry.



CONTENTS



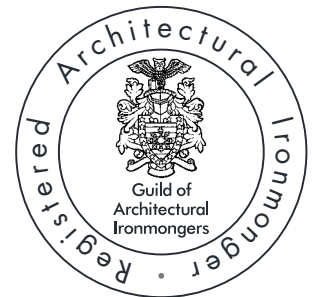
President's Welcome
P.5



An update on
competence
P.9-10



More with less
P.6-7



RegAI - Setting the
standard for
architectural
ironmongery
P.12-13



Judges' Round Table

P.18-20



All about standards

P.15-16



AI Specification Awards 2022

P.21-56



GAI member directory

P.57-67

RegAI directory

P.68-72

John Monaghan
est 1974

John Planck
est 1991

HAF
est 1980

The John Planck Ltd Family of Exceptional Ironmongers



ROYAL OPERA HOUSE, LEISURE



REGENTS CRESCENT, RESIDENTIAL



BESPOKE LEVER HANDLE

GAI/RIBA IRONMONGERY SPECIFICATIONS
MULTI-AWARD-WINNERS

OVER 40 YEARS OF DELIVERING EXCELLENCE

DIPGAI, REGAI, FDIS AND ADSA
ACCREDITED & QUALIFIED

BESPOKE PRODUCTION CAPABILITIES

EXPERT ADVICE

THIRD GENERATION IRONMONGERS

NATIONWIDE COVERAGE

THE JOHN PLANCK LTD FAMILY:

JOHN PLANCK, KENT

HAF, HERTFORDSHIRE

JOHN MONAGHAN, YORKSHIRE



MAILBOXES @ BALTIMORE TOWER



MANCHESTER ENGINEERING CAMPUS,
EDUCATION



HECKFIELD PLACE, HOTEL



DOOR FURNITURE, BESPOKE HARDWARE, DOORSETS, MAILBOXES,
ACCESS CONTROL, AUTOMATIC DOOR CONTROLS, INTERIOR
ACCESSORIES & WASHROOM FITTINGS

CONTACT US:

Scan the QR Code to
download our vCard



www.johnplanck.co.uk
01634 829 249

PRESIDENT'S WELCOME

The Guild of Architectural Ironmongers has set the standard for door hardware since its inception over 60 years ago. Our work continues to advance the industry by not only being open to change, but by actively seeking it out.

We pride ourselves on encouraging architects to use their creativity, to design inspiring spaces, whilst we focus on ensuring the architectural ironmongery industry can deliver on those projects, exceeding best practice and with high levels of competence.

Equally as important to us is our commitment to support the industry as it faces every new challenge, whether that be in response to changing legislation and rules, or the need to adapt to hybrid working.

The latest entries for our AI Specification Awards demonstrate the professionalism and collaboration which we promote as a body. Never has the importance of effective partnerships between architects, AIs and the supply chain been so relevant. The quality, number and range of entries has expanded significantly this year, in particular from outside London, indicating the spread of high-end and technical projects beyond the capital.

The exceptional projects which were shortlisted and feature in this book (Pages 21 -56) are a credit to those architects and AIs who specified them, as well as to the manufacturers who are consistently delivering innovations which help us keep people safe and secure, whilst also adopting new design trends.



This Resource Book contains a detailed directory, allowing every specifier to easily find ironmongery partners to deliver the vision for their next project. Only those in the industry who have attained RegAI status will feature. These individuals are supported and represented by the GAI. You can be assured they are experts in industry standards, regulations and legislation, and that they maintain their position of knowledge and professionalism through a programme of continuing professional development, supplied by us.

Be in no doubt that the Guild is moving forward. We constantly scan the landscape for opportunities and threats. The new Building Safety Act means the need to demonstrate competence and continued learning will be paramount for us all. The Guild provides every AI and every employee of a GAI member company, the opportunity to learn from experts in our regular online CPD sessions, supported by in-person Community Hub meetings across the globe, allowing GAI Members to access their supply chain, network with fellow professionals, and learn from their peers. If you'd like to join us, just get in touch.

Mario Del-Signore
President, GAI
E: president@gai.org.uk



Alley Theatre, Strabane – Alan Jones Architects with Glenn Howells Architects

MORE WITH LESS

Alan Jones of AJA Architects and past President of RIBA explains how by using collaboration, professionalism, ethics and performance, we can achieve the goal of ‘more with less’.



Photography credit – Joe Lavery

Professionalism and collaboration are critical to our industry as we collectively work together towards the common goal of each project’s successful realisation and performance.

Whilst we all must achieve commercial goals to ensure profitability and our ongoing existence, it is increasingly recognised that the long-term success of business and practice is around building relationships based on the same professionalism and collaboration. There has always been a transaction at the centre of every commercial relationship, but contemporary practice and business accept that more surrounds that simple ‘transactional’ core.

For many, success is no longer purely deemed as being on budget and on time. Government and significant clients realise that the lowest cost is no longer the best – and many are turning their attention toward

the medium and long-term value of every building project.

The significant changes are coming from two primary directions. Firstly, from the top-down, with central government needing to meet its commitments, post-Grenfell and in response to the climate emergency, to the broader world and society. Secondly, from the bottom up, with the pressure of the many, of employees, users and consumers expecting and demanding safe, ethically based, healthy, well-performing built environments. Otherwise, many will aim to choose to work and buy elsewhere. Client, user, occupier, and the greater good have become the renewed focus.

Beyond the transactional business of realising a building, increasing longer-term engagement is evidenced by increasing post-occupancy evaluation and the Royal Institute of British Architects annual awards being recently recalibrated, requiring one

year of occupancy, feedback, and review before submission.

Previous attitudes toward the lowest cost and meeting the minimum requirement are being replaced with a careful balance to achieve as much with as little as possible. We have progressed from 'less is more' to 'less is a bore' and 'more is more' and reached the present day critical point in our industry and world – to the essential 'more with less'.

'More with less' is very much the attitude of the moment.

More performance, more positive impact and benefit, with less carbon, less material, less energy and less waste. Our design and construction industry is shifting towards 'more with less' and achieving it requires an increasing emphasis on ethics, professionalism and collaboration.

'More with less' requires questioning previous assumptions, positions, practices and priorities, making 'what we did before' a stance that cannot be maintained or relied upon.

There is an upward spiral, based on the gleaning of, and learning from, feedback on previous projects, that combines with detailed knowledge and understanding of principles, regulations and standards to create better outcomes. These better informed, longer-term outcomes benefit the many rather than the few.

Investors and funders, private and public, being the previous, privileged 'few', are increasingly aware of the greater added value realised when the 'many' perceive and experience benefits and outcomes that improve their well-being and personal circumstances. Attracting and retaining the best staff, greater attendance and achievement at school, greater health, faster recovery rates, better feedback, and lower energy bills are illustrations of an outcome-based approach.

Increasingly, clients are choosing architects, design teams, and solutions that are not based on the lowest cost but rather align with their ideals, ethics, and longer-term value. Major clients seek out those they can successfully work with, who have a track

record of delivering performance and user needs and hopes. There is a challenge in how our industry moves away from appointments based on construction cost percentages, finding ways to incentivise and reward frugal teams that design out material to achieve 'more with less'.

The many years of shoestring fees, unreasonable time schedules and low budgets that kept the industry in perpetual decline, are giving way to a new era. The HM Treasury's 'Green Book' is one signpost to this new medium to long-term value approach, as it advises UK government departments to steer towards this higher road. Such an outcomes-based, ethical, environmental and longer-term performance emphasis is gaining momentum, and a collaborative team effort is required.

One facet of this team effort is the appropriateness of doors and how they operate as we enter, leave and touch each building. The experience, impression, and quality begin with the entrance doors and their handles, or increasingly with invisible sensor beams, electronic activation, and touchpads.

As users, we all know how well-chosen doors and their operation, handles and locks, are indicators of the client's priorities, not just on the day of the handover but also into the life of the building. The ongoing silent closing and 'click' shut of each door,

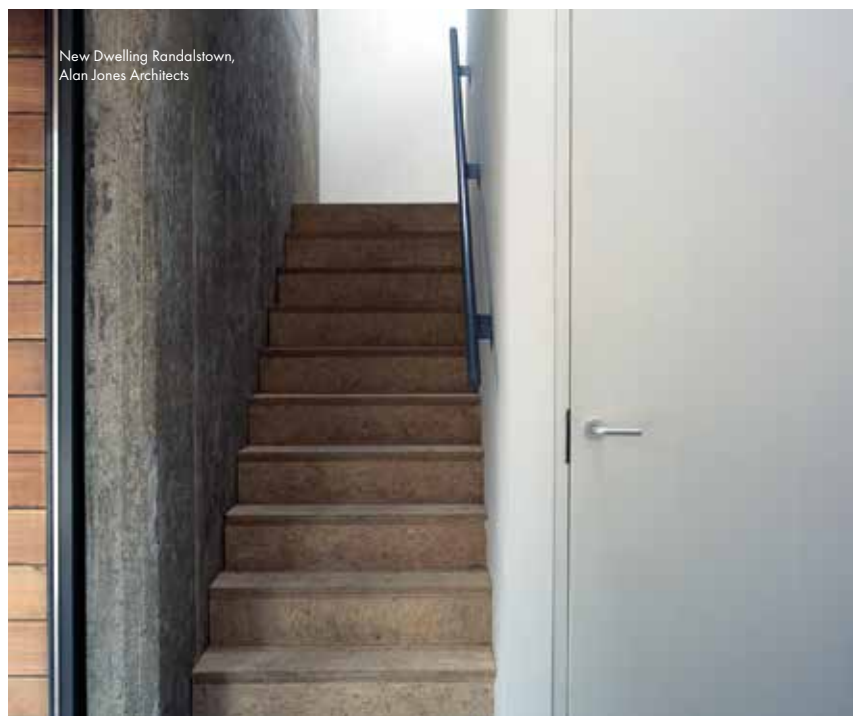
with the necessary seals meeting surfaces, time and time again, brings comfort and confidence that performance and safety are being achieved.

Architects and ironmongery specialists are already combining 'more with less' with the exacting requirements of fire performance and life safety, acoustic separation, security, and user requirements. As this becomes more commonplace, we will truly realise the optimum, most valuable, safe and uplifting outcomes for everyone. 'More with less' can be achieved when we all work together, for the collective good of all.

Alan M Jones is the Professor of Architecture (Practice & Education) at the Queen's University Belfast, a member of the prestigious Russell Group of UK universities.

He was President of the Royal Institute of British Architects 2019-2021 and besides being involved with seven projects that have received RIBA awards, his publications include co-editing Defining Contemporary Professionalism (2019) with Rob Hyde, and his jury work includes the Andrew Doolan Prize for the best new building in Scotland, the Royal Gold Medal, the Stirling Prize and for the Carnegie Trust.

He has been awarded honorary membership and fellowship of the architects' institutes in Scotland (2016) Canada (2019) and the USA (2021).



You have the project. **We have the solution.**

Häfele Projects 360° is a specification partner that can help turn projects into a reality.




A comprehensive portfolio of products - from architectural ironmongery and sliding systems, to access control and security hardware - delivers functional, durable and sustainable interior solutions to suit bespoke requirements.

Paired with outstanding support services, our global expertise, local knowledge, and understanding of distinct project challenges ensures a seamless experience from concept to completion.

Design consultation | Product specification | Detailed schedules | CAD and BIM services
Priced schedules | Onsite training | After-sales support

Our dedicated team of DipGAI qualified specialists are ready to help you fulfil your project requirements.

 0800 171 2907

 estimating@hafele.co.uk

 hafele.co.uk/projects



AN UPDATE ON COMPETENCE

Since the tragic events of Grenfell Tower, the UK construction industry is being driven to increase its levels of competence across the whole sector. Douglas Masterson of the GAI explains the current competence landscape.

The UK Government define competence as “the combination of training, skills, experience and knowledge that a person has and their ability to apply them to perform a task safely”. The Government is currently setting the bar higher and higher in respect of what competence is and how it can be demonstrated, and it will expect the industry to respond to this. A huge amount of progress has been made here through a combination of legislation, standards, committees and working groups. The GAI are pleased to be right at the heart of this process. The following are some of the developments in this arena:

1. Dame Judith Hackitt’s Independent Review of Building Regulations and Fire Safety

The Hackitt Review “Building a Safer Future” was scathing in its criticism of the construction industry following Grenfell and within this the report identified the existence of a “race to the bottom” culture which pervades the UK construction industry. One of many recommendations made in the report was the requirement for increased levels of competence throughout, with the construction sector and fire safety sector demonstrating more effective leadership for ensuring building safety.



2. UK Building Safety Act

In July 2021, the UK Government announced the publication of the Building Safety Bill. The Bill received Royal Assent on 28th April 2022, and has now completed all the parliamentary stages in both Houses to become an Act of Parliament – The Building Safety Act. It is seen as a key step in an extensive overhaul to building safety legislation, giving residents more power to hold builders and developers to account and toughening sanctions against those who threaten their safety. The Building Safety Bill is the direct result of recommendations made in the Grenfell inquiry and the Hackitt Review mentioned above. It should be noted that whilst the Act focuses on in scope high rise residential buildings, in reality this is the biggest change in regulation of the construction sector in some considerable time and will have ramifications for any buildings of any kind going forward.

The necessary change in culture envisaged to achieve the proposed requirements on building safety will be the driving force behind this wider spread of focus. Although the bill is limited to England, it is felt that the other

CONTINUED OVERLEAF



devolved nations in the United Kingdom will adopt their own versions to tighten up on building safety requirements UK wide. The Act will have wide-ranging powers including the allowance of further secondary legislation for the sector. Many of the measures included within the Act are likely to take between a year and 18 months to introduce, according to the Government.

3. New British Standards Institution (BSI) competence standards.

BSI is also building a framework of documents which will raise the standards of competence across the built environment. In addition to the publication of the new British Standard Flex 8670 in 2021, BSI are in the process of creating new standards which will hugely impact three key roles including Principal Designer (PAS 8671), Principal Contractor (PAS 8672) and Building Safety Manager (PAS 8673). GAI are directly involved in the creation and review of each of these standards.



4. Steering Groups set up to increase competence.

A number of Groups have been set up as a direct result of the Hackitt Review, one of the most influential is the Competence Steering Group (CSG) of which GAI are a member. This group was set up to improve the competence of those procuring, designing, constructing, inspecting, assessing, managing and maintaining buildings. It was responsible for the publication of two key industry publications "Raising the Bar" and "Setting the Bar" which provide a blueprint for increasing competence levels across the entire industry.

GAI have direct involvement in two of the Working Groups within CSG; WG7 for designers and architects where it acts as the voice of the construction products industry, and WG12 which oversees competence in the construction products industry and which GAI technical manager Douglas Masterson co-chairs. One of its current functions is the development of a new Construction Product Competence Framework which will be further developed for the ironmongery industry. GAI are also interacting with a number of other Groups to help maintain continuity with regards to construction products.

The Interim Industry Competence Committee (IICC) has been set up by HSE to provide strategic leadership and oversight of industry's work to facilitate improvement of competence in the built environment industry.

GAI have recently been appointed to a sub-committee of the IICC which has been formed to establish a baseline for competence through research of existing industry schemes which will provide a gap analysis thereof to the Government.

GAI is proud to have been in the business of increasing competence levels across our own sector for over 60 years with a portfolio which caters for all abilities. This includes introductory level through Foundation in Hardware, in-depth product knowledge from the Certificate in Hardware, right through to the specification of fully compliant ironmongery products on to a project by achieving DipGAI status. Beyond this the RegAI Continuing Professional Development CPD programme ensures that product knowledge is maintained and kept fully up to date with industry standards and latest developments.

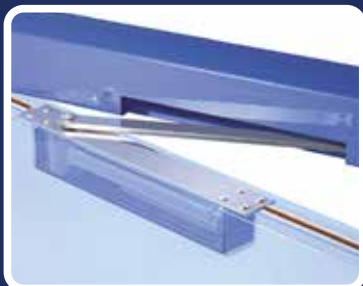
As industry professionals, our levels of competence can all be increased through the development of our skills, knowledge, experience and behaviour; a key part of this is through formal training or by our own continuing professional development. Under the new regime it will not be sufficient to state that you are competent to perform a task, the onus will be on demonstration of this competence. Being trained in your industry from foundation through to RegAI will provide a sound demonstration of your abilities and your competence.

For the latest information with regards to competence, please visit www.gai.org.uk

MANN McGOWAN

Intumescent Fire Smoke & Acoustic Seals

Providing a one-stop solution for all fire, smoke and acoustic seals, glazed screens and door systems.



Pyrocloser

High-performance intumescent gasket designed to encapsulate concealed overhead closers and floor springs.



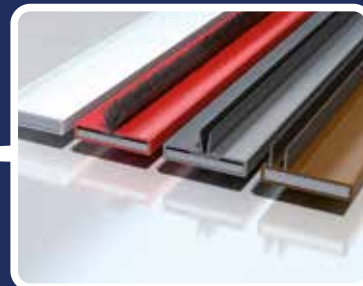
ACS1

Smoke and Acoustic Seal, provides outstanding cold smoke and noise containment.



Pyroglaze

Highly regarded range of self-adhesive encapsulated seals for timber and steel systems.



Pyrostrip

The original intumescent seal, tried and tested in 30/60/90 minute applications around the world.



Pyrohinge

High-performance intumescent gasket for fitting behind hinge blades.



Pyrolock

High-performance intumescent gasket designed to encapsulate lock mechanisms.



Pyromas A

An intumescent sealant providing high levels of fire resistance in a wide range of building applications.



Pyrogrille

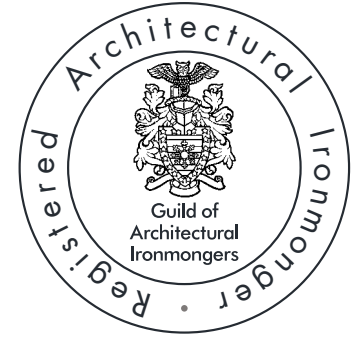
Fire Resistant Air Transfer Grilles offering up to 120 minutes fire integrity.



Automatic Threshold Seals

Robustly constructed threshold seals, providing acoustic, cold smoke and environmental protection.

RegAI: SETTING THE STANDARD FOR ARCHITECTURAL IRONMONGERY



How do you know you are dealing with a fully qualified architectural ironmonger?

Rachel Tipton of the GAI explains why you should be working with a Registered Architectural Ironmonger (RegAI).

Architectural ironmongery typically accounts for less than 2% of the cost of a building, but around 20% of its long-term cost of operation. It is fundamental to compliance and effectiveness against fire and life safety and regulatory requirements.

Working with architects, interior designers, contractors and others to schedule and specify the hardware for every door and window in a building, today's architectural ironmonger must balance the design and budget demands of every project against their responsibility to keep people safe and secure through the advice they provide, the knowledge they impart, and the products they sell. It is a complex role, and one which can be difficult to master.

The established and proven way to identify professionals capable of providing an assured and effective response to these challenges is the Registered Architectural Ironmonger (RegAI). It is globally recognised and understood that a RegAI has reached the highest possible standard for an AI, setting them apart from the rest. It is the ultimate recognition of their commitment, expertise and continuing professional development.

But what exactly is required to become a RegAI and what does it take to reach this elite standard? And why has this qualification become increasingly important to the work of specifiers throughout the construction sector?

DipGAI – Setting the stage

Anyone aspiring to become a RegAI must first achieve the GAI Diploma (DipGAI), the 'must-have' qualification for any architectural ironmonger working on projects to UK and European standards. DipGAI builds on the knowledge gained at the previous Certificate in Architectural Hardware (CiAH) stage, providing the breadth of understanding necessary to produce professional architectural ironmongery specifications.

The Diploma includes five modules: electric hardware, access control, appreciating architects' drawings, master keying and the scheduling of architectural hardware. It involves around 80 plus hours of study, as well as practical sessions, online and face-to-face learning and recommended training courses. Critically, the focus on the DipGAI qualification is that it provides students with hands-on experience rather than theoretical knowledge. There are regular technical scheduling exercises and a recommended three-day training programme in advance of the final written examination. This last component of the Diploma accounts for 90% of the overall assessment and requires students to prepare a full architectural hardware and access control specification, complete with a key control system for a project.

No other training programme ensures such a broad base of knowledge combined with a deep and specific technical understanding of ironmongery in application.

Achieving Registered Architectural Ironmonger status (RegAI)

Once candidates have successfully completed the Diploma and are able to use the post-nominal letters DipGAI, they are equipped with the essential knowledge to produce architectural ironmongery specifications and to progress towards RegAI status. To achieve this, they must go on to complete a full qualifying year of continuing professional development (CPD).

The CPD programme is designed to help GAI members track and document the skills they have gained, both formally and informally through the Guild's CPD and lifelong learning programme.

CPD events are organised by the GAI Community Hub network and delivered throughout the UK and across the world. Regular CPD webinars cover everything from fire doors and standards to soft skills and BIM. An increasing demand for flexible learning has seen an increase in webinars being made available online, with more being added all the time, allowing members to take control of when they learn and earn qualifying points.

Alongside collecting CPD points, coursework papers are also a compulsory component of RegAI study. Based on CPD presentations, and worth one CPD point each, these must be passed with a score of no less than 80%. An optional coursework paper can provide an additional CPD point.

By achieving RegAI status over a minimum of four years of study, an architectural ironmonger has gained the ultimate stamp of professional expertise and knowledge. But of course, once a Guild member has achieved the RegAI standard, they are then required to undertake an ongoing annual programme of CPD to ensure their industry knowledge stays relevant and up to date.

Demonstration of Competence

Whether in response to specific events and tragedies such as Grenfell Tower, or simply as part of their long-term legislative programmes, Governments around the world continue to extend and tighten

the regulatory environment in which construction operates, and to place increasing emphasis on the demonstration of professional competence at every stage.

This makes the rigorous process of qualification and continuing professional development which underpins RegAI status ever more important. It makes sure that RegAI provides a reliable and consistent benchmark for professional commitment, experience and expertise. By helping specifiers identify a professional who has undertaken the necessary training and is completely and unequivocally up to date with industry standards and regulations, RegAI provides essential reassurance that they are fully equipped and qualified to consult and provide the necessary advice in a constantly evolving environment. RegAI professionals will be familiar with the latest products, technologies and trends, and be fully conversant with the latest relevant British and European standards and regulations.

Ultimately, in a sector that is subject to around 60 British and European standards, specifiers as well as contractors and end-users need to know that their projects are being supported by a professional who is fully aware of current legislation around fire and life safety issues and, consequently, that every door and window within a building for which they are responsible will be as safe as possible.

Choosing a RegAI

So, while there is currently no legal obligation to use a RegAI when scheduling and specifying architectural hardware and access control, the qualification is unquestionably growing in importance.

A Registered Architectural Ironmonger is a trusted professional you can work with from the very start of a project. As part of your team, the RegAI will help ensure that the project is delivered on time, on budget, and to the correct standards, legislation and compliance with security, fire, and life safety requirements. They can provide the case studies, testimonials, and evidence you need, based on previous project management you can trust.

RegAI is the pinnacle of a globally established programme recognised around the world for architectural ironmongery professionalism. It is the benchmark standard which all architectural ironmongery professionals should aspire to reach, and with which all professionals throughout the construction sector should aspire to work.

For more details on the RegAI qualification and where to find one to work with, visit www.gai.org.uk/RegAI



HARBRINE

ARCHITECTURAL
IRONMONGERY

A door is only as good as
its ironmongery



Tel: 020 8980 8000
sales@harbrine.co.uk
www.harbrine.co.uk

Harbrine Limited 27/31 Payne Road, London E3 2SP



GEZE

Accessibility and convenience combined



The TS 5000 Ecline overhead door closer with guide rail for barrier-free, easy to open, single leaf doors up to 1250 mm leaf width.

- Suitable for fire and smoke protection doors
- Right and left single action doors
- Single action doors up to 1250 mm leaf width
- Door leaf installation on hinge side
- Transom installation on opposite hinge side

For more information contact our sales team: 01543 443010
Email: sales.uk@geze.com | www.geze.co.uk

Connecting expertise –
building solutions.



Swing Door



Sliding Door



Revolving Door



Window



Glass partition wall



Access control and safety



Building automation



Service and maintenance

ALL ABOUT STANDARDS

The ability to specify and manufacture architectural ironmongery product goes hand in hand with being up to date with all the latest industry standards.

Douglas Masterson of the GAI looks at what a standard is, the impact of Brexit and some recent and forthcoming standards. It should be noted that this information is correct at time of going to press as this is a continuously changing landscape.

What is a standard?

A standard is a stakeholder-led solution which responds to defined needs with its legitimacy being based on a process of consensus and consultation. Standards bodies such as British Standards Institution (BSI) or European Committee for Standardization (CEN) do not “decide” or “set” standards but co-ordinate national expert and stakeholder views in order to create them. They are often voluntary, and when they are, they can underpin regulation and give confidence to markets and to governments. They can also be mandatory such as harmonised or designated standards. They are designed

to support and facilitate international trade, avoid trade barriers and assist with providing fair competition, innovation and risk management.

Standards are of huge importance and have existed since the beginning of recorded history. One of the earliest examples of standardisation is the creation of the calendar. The Egyptians were the first to develop the 365-day calendar and can be credited with logging 4236 BC as the first year in recorded history. Standards cover a wide range of subjects from construction to nanotechnology, from energy management to health and safety, from signage to door closing devices and can be very specific, such as to a particular type of product, or general such as management practices.

Standards play a huge part in the door and ironmongery industry, and it is vital that both manufacturers who place products on the market, and specifiers who schedule the correct product in the right place are kept constantly aware of the relevant standards to our industry. GAI are well placed to represent the ironmongery industry in this arena, currently participating in 24 BSI committees and drafting panels across a number of areas, as well as 4 CEN committees.

Harmonised/designated standard definitions

Harmonised European standards (hENs) are European standards specially created to support European directives. Compliance with a hEN creates a legal presumption of conformity with some



or all of the technical requirements of a directive. The European Construction Products Regulation requires products within the scope of a hEN to declare their performance in accordance with the relevant hEN. This means that, for CE marking under the CPR, only testing carried out in accordance with the hEN is valid.

Designated standards are the Great Britain equivalent of European harmonised standards and were created following the UK's departure from the European Union. These are developed by a recognised national or international standards body through a process of consensus, which is designated by UK Secretary of State and is recognised by government in part or in full by publishing its reference on GOV.UK in a formal notice of publication. UK designated standards and European harmonised standards are currently based on identical versions of the same standard.

The European and UK versions of the Construction Products Regulation (CPR) have made harmonised and designated standards mandatory for any products falling under the scope of such standards. It is currently illegal to offer a non-CE marked product for sale on the UK and European market if it is covered by a harmonised standard. (This will also apply with UKCA marked products after 1st January 2023). Under the Northern Ireland Protocol, NI remains part of the single European market therefore still requires CE marking or alternatively UKNI marking in order to place relevant products onto market.

CONTINUED OVERLEAF

PRODUCT TYPE	STANDARD	USAGE LOCATION
Single axis hinges	EN 1935	Doors on escape routes and fire/smoke control doors
Controlled Door Closing Devices	EN 1154	Fire/smoke control doors
Electrically powered hold open devices	EN 1155	Fire/smoke control doors
Door co-ordinating devices	EN 1158	Fire/smoke control doors
Locks and latches	EN 12209	Fire/smoke control doors
Electromechanical locks and latches	EN 14846	Fire/smoke control doors
Emergency Exit Hardware	EN 179	Locked doors on escape routes
Panic Exit Hardware	EN 1125	Locked doors on escape routes

Any product in the list above should now be CE/UKCA/UKNI marked before being placed on the market for use in the situations specified.

What are the most recent new standards in the ironmongery industry?

Standards are constantly being amended, revised and drafted. The following are some of the most relevant ones to the ironmongery industry, with GAI having been on drafting panels for many of these.

EN 16867:2020 Mechatronic door furniture.

This European standard applies to Mechatronic door furniture fitted on the door set which allows locking and/or release through electronic authorisation. This can be operable by credentials (i.e. card, code, biometric). It can be standalone or linkable to an external control system.

EN 15684: 2021 Mechatronic cylinders.

This European Standard specifies requirements for performance and testing of Mechatronic Cylinders and their keys and/or electronic keys. It applies to cylinders for use with locks as well as other hardware products such as exit devices, door operators, etc. or monitoring facilities and alarm systems.

EN 17372:2021 Power operated swing door drive operators.

This European Standard specifies requirements and test methods for power operated pedestrian swing door drives with self closing function using mechanically stored energy for single and double leaf swing doors with fire resistance and smoke control characteristics.

EN ISO 23386:2020 - Building information modelling and other digital processes used in construction.

This ISO standard provides a methodology to describe, author and maintain properties in interconnected data dictionaries in relation to BIM. BSI published a new standard for UK entitled PAS 14191:2020 which provides further clarity on this topic.

What standards are due for revision or publication?

The following standards are in the process of being created or revised and are due to be published within the next twelve to eighteen months:

prEN 15685 Multipoint locks and their locking plates.

This new standard will specify requirements and test methods for mechanically operated multipoint locks and their locking plates for use in doors, window doors and entrance doors in buildings.

This standard is currently in the final stages of development and covers locks with more than one locking point between door and frame.

prEN 17610 Environmental product declarations – Product category rules complementary to EN 15804 for building hardware. This new standard will provide product category rules (PCR) for Type III environmental declarations for building hardware products for opening and closing doors, gates, windows and shutters.

EN 12209:2016 Mechanically operated locks, latches and locking plates. This European standard specifies requirements and test methods for durability, strength, security and the functionality of mechanically operated locks and their locking plates. The revision to this standard will not be a harmonised/ designated version and CE/UKCA marking will still be required to the 2003 version.

EN 16005:2012 Power operated pedestrian doorsets. Safety in use.

This European Standard is being revised and covers safety in use of power operated pedestrian doorsets used for normal access as well as in escape routes and as fire resistance and/or smoke control doorsets. The type of doorsets covered include power operated pedestrian sliding, swing and revolving doorsets, including balanced doorsets and folding doorsets with a horizontally moving leaf.

Where can I get further information on standards?

The GAI publish regular updates on standards and other technical issues in the Architectural Ironmongery Journal (AIJ) www.aijmagazine.co.uk. The GAI also provide information on an ongoing basis through Specifiers' Guides and Technical Briefings to GAI member companies.

For every place that matters



dormakaba 



Door
Hardware



Entrance
Systems



Mechanical Key
Systems



Electronic
Access and Data



Lodging
Systems



Best In Class
Service

dormakaba UK & Ireland
T: +44 (0)1462 477600
E: info.gb@dormakaba.com

dormakaba.co.uk



Philip Goldberg and Amanda Haley

JUDGES' ROUND TABLE

Following the judging sessions for the AI Specification Awards 2022, we asked the judges of the judging panel for their thoughts about assessing the merits of all the competition entries and the entire judging process.

AI Specification Awards 2022 - Judging Panel

Amanda Haley - Ian Firth Hardware
Barbara Kaucky - Erect Architecture
Catherine Franks - Strand Hardware Ltd
Jonathan Hall - AHMM
Paul Martin - d line Eisenware Ltd
Philip Goldberg - Em-B Solutions Ltd

What have you enjoyed most about the judging and inspection process for this year's AI Specification Awards?

Catherine: It is great to be able to have a detailed look at some of the best projects that AIs have been involved in. The entries were of a very high level and some hard work has gone into the specifications and the entries themselves. I particularly like to see bespoke products and there were plenty this time.

Paul: I enjoyed seeing the strength of products and specifications, proving that specification led projects are holding up well in a very uncertain market. We appreciated all the hard work endured by every business that entered, in order to get these projects across the line. A testament to their skill base.

Barbara: For me, it is the combination of excellent collaboration, design skill and technical problem solving that is a key component of a successful architectural ironmongery project.

Amanda: Seeing what can be achieved on a project when all parties concerned, client, architect, contractor, appreciate and value the role of the AI, and therefore fully collaborate. Where there was strong AI involvement from the early stages right through to completion, those were the projects that stood out.

Philip: It has been a privilege to see inside some incredible projects which you would not otherwise have the opportunity to. The most satisfying aspect of the judging process is the interaction of the panel, made up of a diverse section of industry specialists, all providing their own unique perspective.

Jonathan: It has just been great to be back in the room with the other judges after the past two years - looking at the work presented and debating our positions.

What trends in ironmongery specification have you noticed from entries to the awards this year?

Barbara: We've seen many high-end hotels. Many ironmongery designs were inspired or replicas of historic ironmongery. We also saw high-end residential projects with a strong focus on luxury.

Amanda: There was such a wide array of specifications that no one design/style trend stood out for me. But what was clear was there had been more consideration taken to ensure the ironmongery was sympathetic to its surroundings. In several projects the AIs commissioned bespoke designs of door furniture rather than choosing from existing ranges to ensure they fit the overall scheme perfectly.

Paul: The market trends of colours within hardware haven't disappeared and this year we have seen many entrants place a strong focus on materiality and finishes. The architects and interior designers, along with the AIs are creating spaces that are more welcoming. The cold materiality of stainless steel is now getting enhanced with finishes that appear warmer and change the internal door landscape.

For those of you who have judged these awards more than once, how have you found the difference in the projects submitted this time from previous years?

Catherine: The quality of the entries and the detail was much better – there were more images of actual ironmongery in-situ.

Philip: It was encouraging to see the high quality of projects completed either just

before or during the pandemic. Especially pleasing was the geographical dispersion of the entries and this competition was less London centric than the previous competition, evidencing quality projects nationwide. What will be interesting is whether the quality is maintained or improved in the next awards as the economy comes out of its current position.

Jonathan: I think this year there has generally been more care by competitors in their presentation of what is essentially an on-line submission. Having to articulate what really makes their application worthy of nomination, backed up by a concise but careful explanation of why the products are suitable for their purpose – and all in the context of what is special about the project, really does make a difference to how the submission stands out.

Paul: I can see that the Architectural Ironmongers who are strong in the specification market are working extremely hard to keep hold of their projects. Specifications entered for this year's awards seem more complete, adding washroom, access control and even

bespoke solutions. Our industry needs this to survive. By applying "more", I can see this binding the specifier to the project stronger than previously.

What in your opinion makes one project really stand out from another in respect of these awards?

Barbara: It is close collaboration between the architect/client team and the AI which really makes projects shine. Also, projects that are well documented, show the design context and demonstrate how ironmongery is an integral and key part of the design vision are a pleasure to judge.

Jonathan: The competitors who carefully think about what to focus on in both the written submission and the photographs – so they tell the story of the specification and what it has achieved, have a head start. The presentation itself needs to be designed – in the same way as the original building.

Philip: This is an ironmongery specification award and the attention to detail and the quality of the product being sympathetic



Catherine Franks and Barbara Kaucky



to the building goes part way to making the submission stand out. But what really makes a difference is the feedback from the building owner, when they praise the specifier for their attention to detail and diligence in servicing the customer needs and ultimately meeting their requirements and demands. This speaks volumes of the business as the specifier is only as good as the support they receive from inception of the specification to the supply of the products in a timely manner usually at the end of the project when deadlines are imperative.

Catherine: This was definitely evident in the entries. For example, the range of product, detail and effort that went into Grantley Hall was super impressive – there were elements of both refurb and new build and the ironmongery was well matched throughout.

How vital is the correct specification of ironmongery to the project?

Jonathan: Absolutely vital. But there is often some debate as to what 'correct' means in the circumstances of the specific project – so always something to discuss.

Catherine: Correct specification ensures that the products not only look fantastic but meet legislation and will last.

Philip: There is no room for error. With the experience of the judging panel and the

level of scrutiny each submission receives, with challenges being raised both from an aesthetic and technical perspective, flaws in the specification are often identified. It is a specification award! Flaws are marked down and errors resulting in failure to comply with standards significantly impact on the projects chances of success.

Projects are judged based on compliance with regulations, aesthetics of the ironmongery and how well it fits with the building, and validation of the reasons submitted for nomination. Do you feel one is more important than another or are they equally important?

Catherine: I feel that they are equally important – as a Guild it is vital that member AIs specify compliant product but they also need to look right and match the scheme, age and type of building.

Barbara: Compliance with regulations is a baseline, without compliance no award. For me personally, how well the ironmongery fits the building design is the key category.

Jonathan: From my perspective, compliance with regulations is a straight pass/fail hurdle, although there can often be some debate amongst the judges as to what is in practice accepted as compliant. I always treat the 'validation', 'suitability' and 'aesthetic appeal' criteria with equal weight – and indeed I think they do rather overlap and can be difficult to separate. The best projects (however modest or special in straight 'architectural' terms), always demonstrate a collaborative approach between the architectural ironmonger and the architect with the best interests of the building users at heart – both in terms of functionality and the aesthetic experience.

Paul: I believe all criteria are important and can also compliment one another. A building with a 19mm U shaped lever handle may still work, but one that has a stronger emphasis on design will always grab my attention.

Amanda: I feel the best projects get the balance right of all the requirements. Whilst meeting regulations is a must, the best projects did this gracefully and

effortlessly, blending in to the building when it needed to and adding accent to the décor to enhance the overall aesthetics.

What would you like to see more of from entries to the awards in future years?

Philip: It would be helpful in future if there are more images as well as video footage of the ironmongery working in situ. This would provide more breadth of product and how the ironmongery works within the setting. It would also provide the non-ironmongers on the judging panel greater understanding of the products they are judging and how they work in the environment.

Barbara: Better story-telling, better documentation showing how the ironmongery supports the architecture, less focus on money and extremely expensive projects.

Catherine: I agree. It would be good to have an idea of the total budget for the building and what percentage is ironmongery, it is natural that high budget projects are entered but it would also be good to see more community, lower budget projects where AIs have used their skill and knowledge to specify products within tight budgets, but which still look good and are obviously compliant.

Paul: I would love to see more modern developments bought into the mix and actual new buildings. We can see in 2022 there are many refurbished projects and not so many new builds in the frame. I am sure they are out there to be entered.

Amanda: Sustainability has to be a larger consideration in the future for our industry in terms of what the products are made from, how they were manufactured, how far they've travelled, how long they will last in-situ and how they can be repaired/replaced when the time comes. Perhaps this factor should become part of the scoring process in future.



AI SPECIFICATION AWARDS 2022

Celebrating the best in architectural ironmongery specification

Organised by the Guild of Architectural Ironmongers (GAI) in conjunction with the Royal Institute of British Architects (RIBA), the AI Specification Awards identify and reward excellence in the specification of architectural ironmongery in the construction industry.

Celebrating its 40th anniversary, the AI Specification Awards returned bigger and better than ever. Following the postponement of last year's awards, the judging panel assessed projects completed and products launched over the last 3 years.

Judges looked at the scope of works, the suitability of the architectural ironmongery and whether it is fit for purpose, its compliance with relevant regulations and standards, and its aesthetic excellence. The winners truly represent the best that architectural ironmongery has to offer, providing a celebration of the finest work in the industry.

Over the following pages, we celebrate the shortlisted projects/products and winners from the 2022 awards.

IN ASSOCIATION WITH



Guild of
Architectural
Ironmongers



JUBILEE AWARD

To mark the 40th Anniversary of the AI Specification Awards, the Guild of Architectural Ironmongers and Royal Institute of British Architects have taken a look back over the previous winning ironmongery specifications over the years and then selected a shortlist of projects (shown overleaf) which celebrate the best of the best in our industry, showcasing projects from across the world and across the decades.

The judging panel then chose the one project which stood out from the rest as the example of architectural ironmongery specification at its best. This project was Adare Manor Hotel & Golf Resort, Ireland and it was named the Jubilee Award Winner at the AI Specification Awards 2022.

Jubilee Award Winner sponsored by
eurobond doors

JUBILEE Award **WINNER**

Adare Manor Hotel & Golf Resort, Ireland

Interior Designer Richmond International

Architectural Ironmonger Harbrine Limited / Mooney Architectural

Summary

The Adare Manor project required the hardware specification of the renovation of the existing manor house and the new build extensions of this world class hotel and golf resort (approximately 1500 doors).

Ironmongery specification

The gothic style of Adare Manor lent itself towards ironmongery in a pewter finish. However, the products available in such a material/finish contradicted the designer's brief of high durability. The products selected for the guest rooms and public areas were from Sun Valley Bronze of Idaho, USA. The dark patina on white bronze cast products proved to be the perfect choice for meeting both the design and durability criteria. However, their products were only designed to suit the North American market, resulting in a co-ordinated programme of redesigning the products to suit European hardware.

With an enormous amount of bespoke products and the requirement for a number of products to operate with the Vingcard locking system, the architectural ironmongers worked diligently to design and test the products to ensure they work perfectly in harmony with the access control requirements across the entire project.

Judges comments

"This project is a worthy winner of the Jubilee Award as it encompassed all that is good about our industry. Attention to detail, care in choice of material and co-operation with the design team and client produced an exquisite result."





JUBILEE Award HIGHLY COMMENDED

Scottish National Portrait Gallery, Edinburgh

Architect Page Park

**Architectural
Ironmonger** Allgood Plc

Summary

Originally designed by Robert Rowand Anderson, the category A listed Gothic building in Edinburgh is the home of the Scottish National Portrait Gallery. When embarking on the first major refurbishment in the Gallery's 120-year history, the client appointed Page/Park Architects to restore much of the vision of the original architect.

Ironmongery specification

The use of many existing doors created a challenge of providing contemporary hardware to meet fire and building regulations, whilst working with existing ironmongery. A lot of the ironmongery on many of the existing doors needed replacing. The brief to Allgood was, wherever possible, to specify ironmongery that would fit the existing mortices without door repair. Although challenging, Allgood were able to source specific items of ironmongery to exact mortice dimensions, all in a brass finish to match the existing. Many items were supplied to match existing furniture which again proved challenging.



JUBILEE Award SHORTLISTED

Centre Point, London

Architect Conran & Partners

**Architectural
Ironmonger** Allgood Plc

Summary

Originally designed by Richard Seifert, Centre Point was one of the UK's first skyscrapers. As part of a £350 million regeneration, the building has been transformed with 82 new luxury apartments where each and every component had to be fine in design and timeless in quality and performance.

Ironmongery specification

Managing the specification, development and delivery of the ironmongery and hardware requirements, the architectural ironmonger supplied many bespoke elements and high specification finishes.

Taking visual architectural cues from the building's 1960's geometric patterning and monochromatic styling, the bespoke ironmongery comprised handles, locks, lever sets, wardrobe pulls and shower door pulls. These were made from mirror polished nickel with an unusually high standard of polishing applied to all surfaces, even on the reverse. This was on the request of the client and underlined the quality of finish throughout.



JUBILEE Award SHORTLISTED

Hong Kong International Airport

Architect Foster + Partners

**Architectural
Ironmonger** Allgood Plc and Key Technologies
International Ltd

Summary

Home to over 220 shops and 60 restaurants and with 78,000 staff as well as millions of passengers, the airport required an ironmongery solution that could last several decades and meet the high-performance demands of one of the world's busiest international aviation hubs.

Ironmongery specification

One of the largest ever ironmongery specifications at the time, valued at over £1 million, this was the beginning of a 23-year working relationship with Airport Authority Hong Kong (AAHK) where Key Technologies International Ltd continue to offer expert advice, on-site technical support and parts supply. Today, despite the daily demands of a leading international airport, many of the original pieces of ironmongery remain in good working order. This is a testament to the quality of the specification, the products and the open and transparent exchanges of users' requirements between AAHK, the partner and the ironmonger that has ensured continued safe operations at the airport for over two decades.



ZOO

ARCHITECTURAL HARDWARE



Zoo Hardware are designers and suppliers of the finest quality architectural door and window hardware, including; door handles, knobs, locks, hinges, door closers, signage, accessories and much more.

T: +44 (0) 1228 672 900
E: sales@zoo-hardware.co.uk
W: www.zoohardware.co.uk

OUR BRANDS INCLUDE:





JUBILEE Award SHORTLISTED

Kings Gate, London

Architect Lynch Architects

**Architectural
Ironmonger** izé

Summary

For these 100 luxury apartments and penthouses, izé's imaginative specification included door furniture in solid cast nickel silver, which they believe is the first use of nickel silver in a major project since the 1960s. The effect is enhanced by a variety of hardware, custom designed to architect's conceptual detail.

Ironmongery specification

This is a stunning development, and the architect is clearly proud of both the scheme and the hardware. The design, manufacture and supply of the bespoke handles really demonstrated the value that comes from such a strong relationship between architect and architectural ironmonger.

Other ironmongery specified to great effect included concealed hinges and flush pull handles which required little emphasis to fade neatly in to the background. izé has sensitively selected the appropriate fittings throughout this scheme in all situations and should be justly proud of the end result.

JUBILEE Award SHORTLISTED

Rose Lodge, Hebburn

Architect MAAP

**Architectural
Ironmonger** Laidlaw Solutions

Summary

Rose Lodge was funded by Northumberland, Tyne & Wear NHS Foundation Trust and has 12 inpatient beds. It offers a specialist short-term inpatient assessment and treatment centre for working-age adults with a range of learning disabilities and mental health problems. Laidlaw Solutions has carried out the specification with careful consultation with the architect and the client to give a safe and friendly environment to some very challenging patients.

Ironmongery specification

The ironmongery on this project presented a number of challenges. The security and safety of patients and staff was paramount while the architects specified that the building design should, where possible, avoid an 'institutional' feel. The NHS Trust required the building to meet a 'medium secure' level, so anti-ligature products were specified including bedroom, washroom and communal room locksets, all with primary or secondary barricade features. To meet these specific requirements, a full range of anti ligature products were employed in satin stainless steel.



JUBILEE Award SHORTLISTED

Royal Opera House, London

Architect BDP & Dixon Jones

**Architectural
Ironmonger** John Planck Ltd

Summary

When the major refurbishment of the Royal Opera House was originally undertaken in the mid-late 90's, architects Dixon Jones & BDP turned to John Planck Ltd when the client challenged them with sourcing ironmongery which maintained the tradition and splendour of the House, but which also complied with the latest standards.

Ironmongery specification

The original ironmongery supplied has certainly stood the test of time, having been installed for over 20 years now and is functionally still as good as ever. The 'Classic' styling of products in the public facing areas is still in keeping with the environment and decor. With over 1,000 staff, plus contractors using the building every day, the ironmongery has to stand up to demanding rigours. The ironmongery is certainly of a top quality and has only been replaced where it has been mistreated.



JUBILEE Award SHORTLISTED

Tate Britain, London

Architect Caruso St John

**Architectural
Ironmonger** Allgood Plc

Summary

Working closely with architects Caruso St John, the ironmonger was tasked to create and supply an ironmongery specification of unique aesthetic detail combined with many technically difficult ironmongery applications for this iconic art gallery.

Ironmongery specification

Working on such a prestigious project, it was evident that aesthetics were of paramount importance. The architect desired a unique finish on items so the ironmonger worked closely to produce a shot peened finish on many of the stainless steel furniture. Due to the frequency of visitors to Tate Britain, it was important that the ironmongery specification would be robust, durable and capable of performing to the highest standards. Additionally, many doors throughout the building were very tall and heavy, demanding an ironmongery solution that was fit for purpose. A solution was created by selecting high quality items throughout the specification with the highest level of warranties, to ensure that Allgood exceeded the performance requirements for the project.

GAI EDUCATION

Develop your staff and company with the GAI's internationally renowned and respected education programmes. The best place for those in the architectural ironmongery industry to learn with a range of online training resources.

Foundation in Hardware

The Foundation in Hardware module is intended to provide a basic knowledge of the subject of architectural ironmongery to enable the learner to go on to further study in that field.

Certificate in Architectural Hardware (Stage 1 & 2)

A commitment which will give you a thorough grounding in the understanding of the what, how and when of ironmongery. Upon successful completion of Stage 1 and 2, learners can undertake the GAI Diploma.

GAI Diploma

This GAI Diploma builds on the product knowledge already gained in the Certificate in Architectural Hardware and seeks to bring application through developing scheduling skills. The course imparts how to write accurate hardware specifications and have confidence in discussing ironmongery requirements with clients.

CPD Programme

The CPD programme is the single most important way that those who have attained the GAI Diploma can develop their abilities and set themselves apart as architectural ironmongery professionals and become a Registered Architectural Ironmonger (RegAI).

Fire Door Inspection Scheme (FDIS)

FDIS provides education which is essential for anyone working with fire doors and escape doors. Transforming knowledge and understanding about the critical role of fire doors and how they can save lives and protect property.

Find out more at gai.org.uk/education

CARLISLE BRASS

Long-standing designer, manufacturer and distributor of Architectural Ironmongery



 **EUROLITE**  **EUROSPEC**  **SEROZZETTA**  **MANITAL**

CARLISLE BRASS LTD. Parkhouse Road, Carlisle, Cumbria, CA3 0JU
Sales: 01228 511030 www.carlislebrass.com





WINNER OF WINNERS

Grantley Hall, Ripon

"The breadth and range of products used on this project was inspiring. From split finishes of ironmongery on bathroom doors to the specification and supply of ironmongery which reflected the different periods required in the hotel, this one was a treat to inspect."

Judging Panel

Find out more about the winning project overleaf (Pages 32-33).

Winner of Winners sponsored by





Commercial & Hospitality Award **WINNER**

Grantley Hall, Ripon

Architect Bowman Riley

Architectural Ironmonger Em-B Solutions Ltd

Summary

The magnificent Grade II Grantley Hall in Yorkshire opened in the summer of 2019 as one of the UK's most luxurious hotels and spas after decades of neglect. Surrounded by thirty acres of beautiful Yorkshire countryside, 17th century Grantley Hall is set on an artificial island created by the canalisation of the River Skell in Ripon.

The renovation was inspired by its original country house grandeur, and while the original building has been retained and restored, it has been joined by two sympathetic new buildings: a new spa building and bedroom wing in a modern Georgian style.

Ironmongery specification

Em-B worked closely with all three architects on this major refurb/new build project. In the old buildings, Em-B worked hard to retain existing hardware where possible, mindful of the need to upgrade to fire door standards where applicable. New ironmongery was carefully matched to the old to provide a consistent design approach throughout. A new security and access control suite, based around a SALTO system, was also integrated with existing hardware in the old part of the hotel.

This special project required an extraordinary level of design care to integrate the older listed and modern parts of the hotel. As well as organising the hand restoration and renovation of existing historic hardware such as handles and hinges, Em-B carefully adapted hardware designs and finishes throughout the building to reflect different styles and functions. Antique brass and stainless steel were chosen where appropriate to ensure that the hardware scheme worked seamlessly across the piece.

Judges comments

"An excellent project – from refurbishment of old to supply of new – tremendous work. A privilege to spend time judging this project."





Commercial & Hospitality Award **SHORTLISTED**

Vintry and Mercer Hotel, London

Architect Dexter Moren Associates

**Architectural
Ironmonger** Yannedis

Summary

To support the timeless luxury of the award winning Vintry and Mercer boutique hotel, Lloyd Worrall's London branch, Yannedis, has delivered a complete package of retro styled architectural ironmongery.

Ironmongery specification

Yannedis was brought onto the project during the design phase and collaborated closely with representatives of the hotel's owners and the design team on the selection of the door hardware.

The historical influences in the design scheme means that finishes such as antique brass are featured throughout the guestrooms and public areas of the hotel. Yannedis recommended ironmongery in Italian Antique Brass for pull and lever handles, door knobs and pocket door WC locks. Yannedis also supplied concealed low opening force door closers, which were specially finished in antique brass to match the other hardware. Also specified, was a range of electric strikes for the guest room doors. The visible surfaces of the electro-mechanical door locking devices were also matched to the colour of the door.



Commercial & Hospitality Award **SHORTLISTED**

Aldwark Manor Estate Hotel, York

Architect Studio Map

**Architectural
Ironmonger** Em-B Solutions Ltd

Summary

Aldwark Manor is a superb golf and spa hotel in a picturesque village between York and Harrogate and set in 185 acres of beautiful countryside. The manor house that forms the heart of the hotel was built in the 19th century and has now been supplemented by state-of-the-art spa facilities and a refurbished golf course, and modern hotel bedrooms.

Ironmongery specification

Em-B was involved in the refurbishment from day one of the project, working closely with the architect Studio Map, collaborating to design and supply a full door hardware, doorset and access control package across both the new and old parts of the hotel. The door hardware package was designed around an Italian satin brass handle and escutcheon which set the design tone for the whole scheme. The schedules had to encompass both new and old doors, new openings and specially refurbished hardware. With a brief to retain the original character of the manor, Em-B chose sympathetic hardware such as concealed closers to make the ironmongery as discreet as possible.



Commercial & Hospitality Award **SHORTLISTED**

Heckfield Place, Hampshire

Architect Spratley & Partners

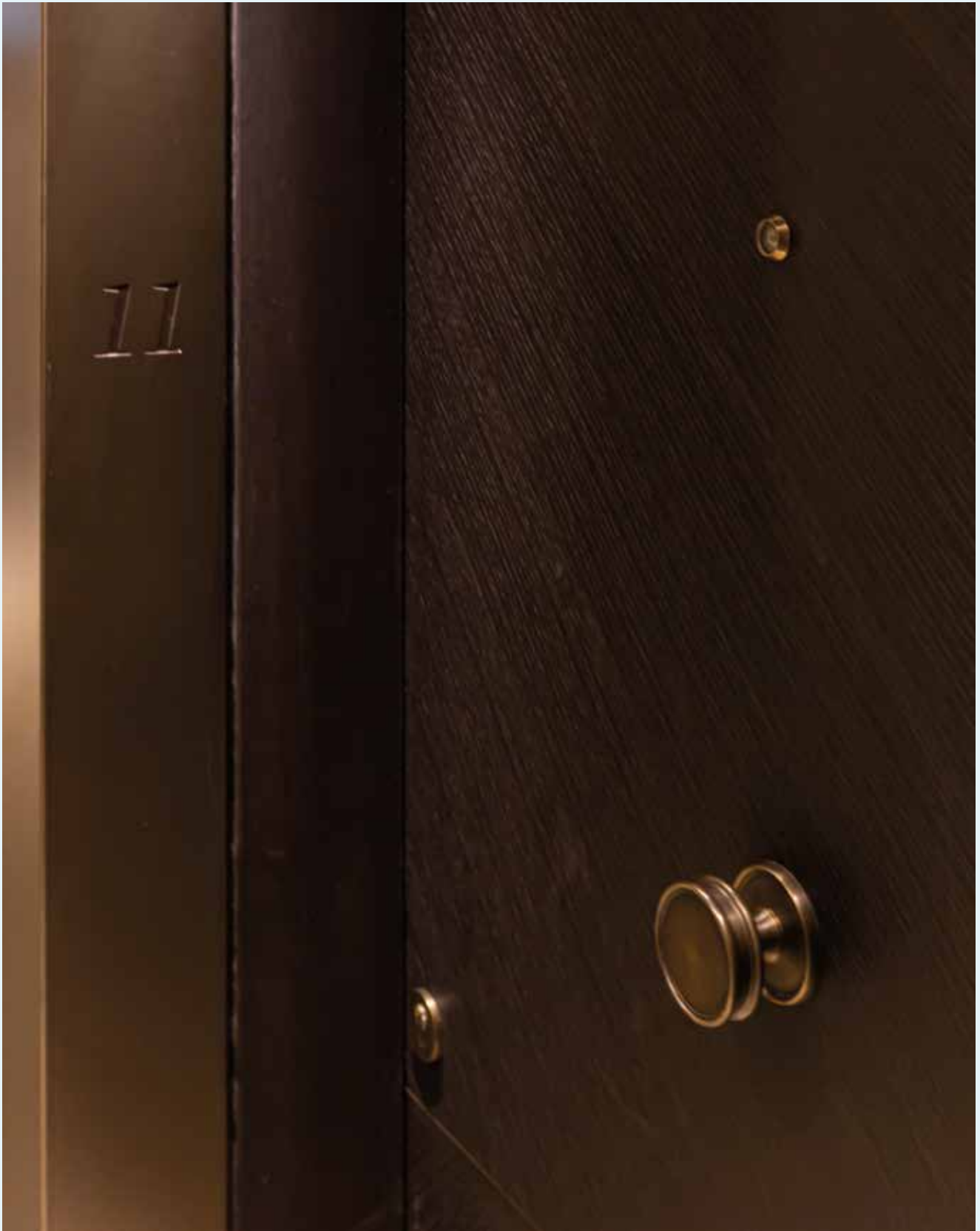
**Architectural
Ironmonger** John Planck Ltd

Summary

The 430-acre Hampshire Estate consists of an 18th Century manor house and newly constructed buildings styled to complement the Georgian manor providing 51 rooms and suites, a garden mews, private cottages, two restaurants, cinema screening room and luxury spa.

Ironmongery specification

There was a requirement for a number of bespoke elements to meet the constraints of the existing and retained features to satisfy English Heritage. As a project, it had many complex elements that called for unique architectural ironmongery solutions. One key point of the brief was for the ironmongery to closely retain the original design, finish and character of the existing Georgian manor house, which resulted in the real bronze furniture and matching finish accessories being selected to naturally patinate over time, whilst also having to work around the constraints of the existing doors, frames and mortices.



Residential Award WINNER

Regent's Crescent, London

Architect PDP London Architects

**Architectural
Ironmonger** John Planck Ltd

Summary

Regent's Crescent is a prestigious, super-prime residential development overlooking Regent's Park. The development makes up one half of the semi-circle of Regent's Crescent, designed by world-renowned Buckingham Palace architect John Nash in the 1800s. Upon completion, it's the first Grade I listed site to be granted permission to be demolished and re-built, retaining its Grade I listed status - typically only granted to existing buildings with significant heritage. The attention to detail extended to all elements of ironmongery, with the majority being bespoke to adhere to the exacting heritage requirements.

Ironmongery specification

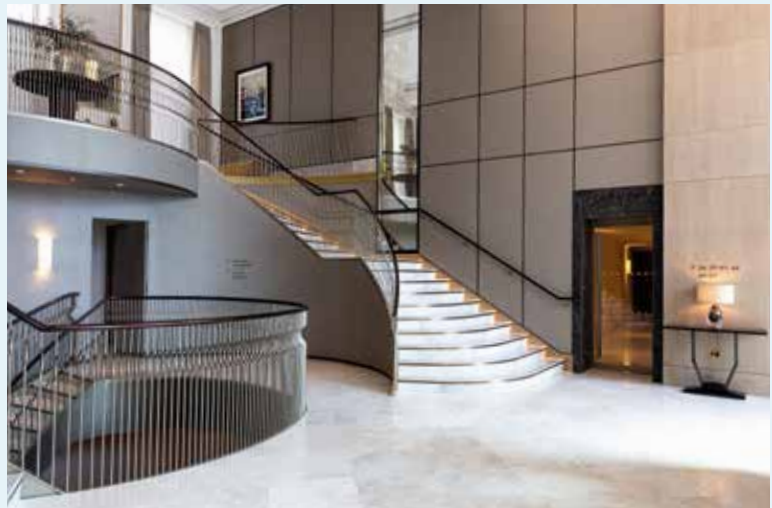
All ironmongery was supplied in a custom unlacquered, burnished bronze finish to complement the flourishes and accents from the Regency period within the contemporary designed apartments. This particular finish meets the brief given by the client that it would develop a natural patina through use, over a period of time.

The core door furniture was re-produced based on bespoke designs that formed a part of the original designs within the development prior to the re-construction. The pull handles were manufactured to match the lever design but also produced at varying lengths, intended to align with the vision panels of the doors within the communal areas.

Aesthetics were key to the success of the project and therefore concealed hinges were specified throughout. Over 3,500 hinges were supplied in total with a combination of four differing hinge types to suit the varying door type intricacies, weights and fire ratings. To further support the minimalistic approach for the functional ironmongery, magnetic locks were specified to the apartment entrance doors and all internal doors. With the lever handle weighing over 1kg per set, it needed careful consideration to produce a custom spring mechanism to self-support the handle and avoid any 'drooping' when in operation.

Judges comments

"This tapped into the very essence of the building – a beautiful specification inspired by the original ironmongery prior to the demolition of this building's predecessor."





Residential Award HIGHLY COMMENDED

Lancer Square, London

Architect Squire + Partners

**Architectural
Ironmonger** Franchi PLC

Summary

Lancer Square is a new development of thirty-six boutique apartments and penthouses nestled in the heart of the Kensington Palace conservation area in London. With an exclusive, high end design, the development demanded an architectural ironmongery package to match. With a combination of crafted design details, bespoke-manufactured items and a mixture of finishes, the architectural ironmongery specification contributed in creating the luxurious interior aesthetic of this project.

Ironmongery specification

A co-ordinated architectural ironmongery package was created for the project including all door trim and mechanical hardware across the development. For the communal areas and residences, ironmongery was supplied in matching Gold-plated finishes providing a high-end aesthetic in keeping with the opulent interiors. This included bespoke-made lever handles and pull handles featuring etched, fluted and knurled details. Hexagonal flush pulls and 150mm feature centre door knob handles were also supplied.

In order to provide consistency of design, the same door furniture items were supplied in bathroom areas, but in Polished Nickel finishes. To ensure that the mechanical hardware was as discrete as possible, a range of concealed closers and concealed bearing hinges were provided. Finally, a full package of satin stainless steel items was created for the back of house areas including the supply of a complicated access control system.

The development featured a hexagonal design motif throughout the building and in its branding. The client was interested to see how elements of the motif could be incorporated into the door furniture items. Working closely with the Squire + Partners, Franchi produced a host of bespoke-designed items for the development. Lever handles were created which incorporated the design motif at the junction of the stem and handle as well as at the end of the lever handle bar. Furthermore, unique hexagonal flush pulls were developed to mirror the design motif of the development.

Residential Award **SHORTLISTED**

The Rectory

Architect Nick Auston Design

**Architectural
Ironmonger** SDS London Ltd

Summary

Complete refurbishment and restoration of a Grade II listed building. The property was previously used as a care home and has now been restored to its initial former glory using architect plans from 187 years ago. It is now a warm, family home.

Ironmongery specification

Traditional Antique Brass & Bronze hardware used throughout the property. Original Rim lock restored and extra key copies cut to it. The lock forends throughout have been engraved with the family crest.



Residential Award **SHORTLISTED**

Chelsea Barracks Luxury Apartments (Phase 1), London

Architect HBA Architects with Squire + Partners

**Architectural
Ironmonger** izé

Summary

Squire + Partners master planned the site and designed individual buildings, including this one. Everything is a little larger than usual, with a solidity that makes it clear that this is a project where no expense has been spared. To achieve this, izé had to ensure that every element was detailed and manufactured to the very highest standards.

Ironmongery specification

Hospitality design firm HBA paid meticulous attention to the interiors, including designing the door hardware exclusive to this project. These are door handles and associated elements that are designed to last. The recessed rectangular slide closers, boldly geometric faceted knobs and the slightly flaring square-section lever handles have a haptic quality that reminds residents every time they move from one room to another that they have luxury, literally, at their fingertips.

Door-Stop International Product Focus:

The Door-Stop International Fire and Security Dual-Certificated Doorset is third-party certified using a robust base of primary test evidence as the foundation for certification.

Available as internal and external flat entrance doorsets, the Fire and Security Dual-Certificated Doorset is manufactured using a bespoke digital 'Critical to Safety' production framework that records the multiple checks carried out on the components and manufacturing processes of each doorset.



For more details on our product range please visit:

www.masonite.co.uk/firedoorsets

 MASONITE.

Fire and Security Dual-Certificated Doorset:

Choice of a slide arm or v arm closer that can be adjusted to achieve various opening forces

Traceability label affixed to each doorset to help stakeholders find the publicly available certification documents and datasheet.

A solid timber core with GRP facings

Grade 13 stainless steel fire door hinges

Tested with two different methods of linear gap sealing to prove installed performance

Part M compliant threshold

Graphite based intumescent seals, encapsulated in red PVC

UPVC frame with timber reinforcement

Patented glazing system with security and fireglass

Suited ironmongery in silver or gold finishes

TS008 fire rated letterplate with security cowl

Available in 10 door styles with 11 door leaf colour options and 6 glazing styles.



Visit our website



Public Health & Education Award **WINNER**

Cambridge Mosque

Architect Marks Barfield Architects

Architectural Ironmonger d line Eisenware Limited

Summary

Planning for Cambridge Mosque began when the existing Mawson Road mosque began to experience capacity issues, with latecomers having to pray on the street. A limited international competition was held, calling for inventive and innovative ideas for a 1,000 capacity mosque that is truly sustainable and socially and architecturally integrated into and respectful of its neighbourhood. It is intended to announce Islam's presence in Cambridge as a spiritual and cultural centre not only for Muslims but also the wider community.

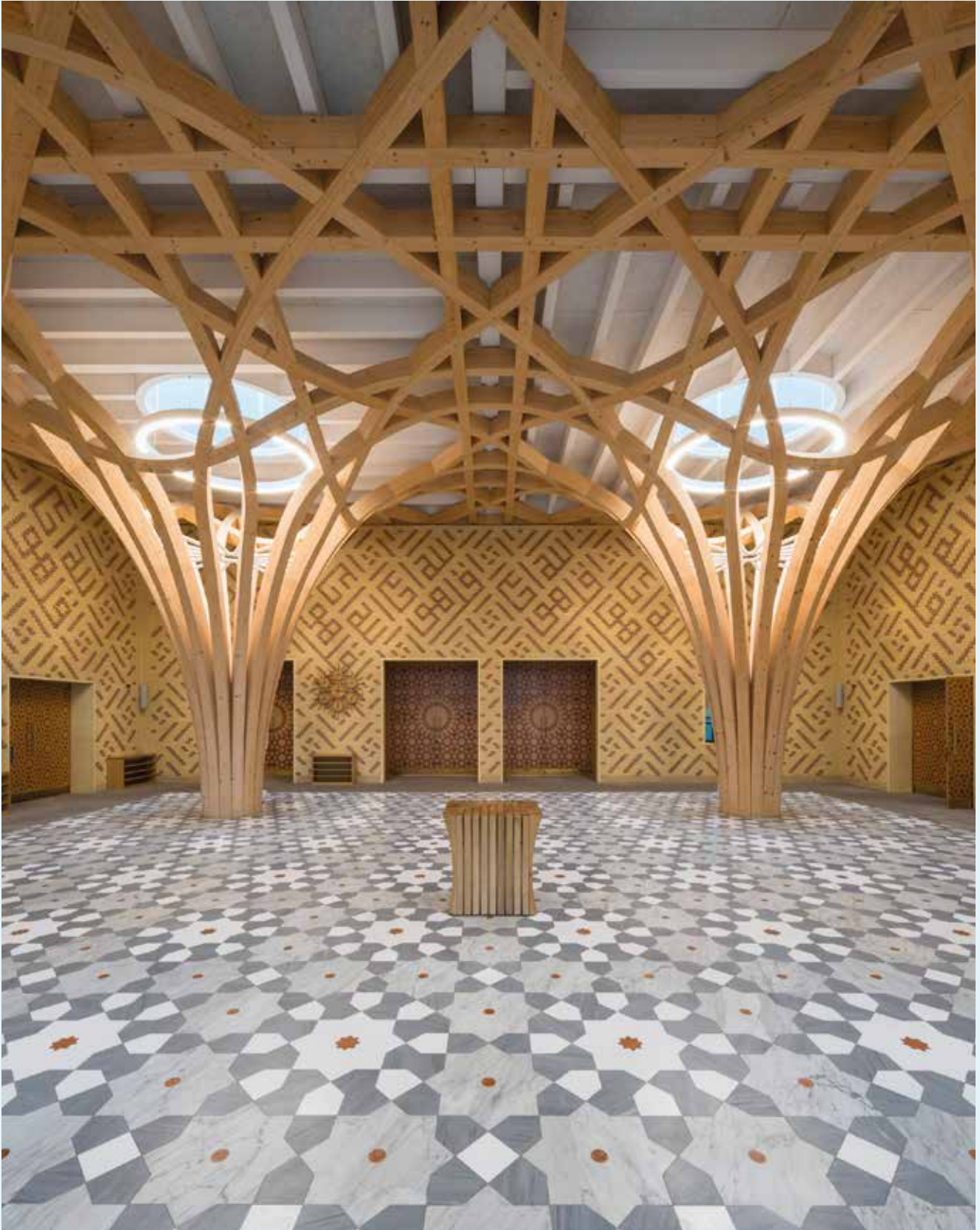
Ironmongery specification

This was an incredibly technical specification where time was indeed taken to ensure d line met the brief set by Marks Barfield Architects and the client. A natural looking product to blend into the natural look of the building specified. This brief was met and also went beyond.

d line were approached by Marks Barfields Architects to prepare a detailed architectural hardware specification, which would offer a sustainable product produced in a hard, enduring satin brass finish for the front of house areas and satin stainless steel back of house.

Judges comments

"This was a project where the ironmongery selected fitted the brief exceedingly well – using satin brass in front of house and stainless steel as back of house finish. Ironmongery was carefully selected and concealed hinges where necessary. Satin brass finish was very well matched throughout the project on all relevant items including the handrail brackets."





Public Health & Education Award **HIGHLY COMMENDED**

142-146 Harley Street, London

Architect Sonnemann Toon Architects

Architectural Ironmonger 3v Architectural Hardware Ltd

Summary

Connecting three listed properties together, 142-146 Harley Street is where Lionel Logue practiced his pioneering speech therapy on King George VI, as depicted in the film 'The King's Speech'. This was a challenging project as there were two separate briefs. There was the old that needed updating whilst retaining the traditional feel of the building. Then there were the medical areas in the basement that required a practical and easily maintained product.

Ironmongery specification

Products supplied included traditional knob furniture from Frank Allart in a matt black nickel finish for the traditional areas and Vieler satin stainless steel furniture for the medical areas. All the accessories were carefully chosen in matching or sympathetic finishes. For example, it was not possible to fit concealed closers into the existing doors and therefore overhead, surface mounted white closers were specified to blend in with the door finish. Appropriate sash window furniture was sourced and supplied in the same matt black nickel finish.

The client requested that modern fire signage on the face of the door be avoided if at all possible. Therefore concealed 'lollipop' signage was supplied. It was highlighted that this did not comply with the guidelines of BS5499 nor Approved Document B and therefore approval from Building Control was sought and granted.

Public Health & Education Award **SHORTLISTED**

Bath Abbey

Architect Feilden Clegg Bradley Studios

Architectural Ironmonger Allgood Plc

Summary

Bath Abbey sits at the heart of the historic city of Bath where there has been a place of Christian worship on the site for more than 1,300 years. The Bath Abbey Footprint Project sought to ensure the 17th Century Grade I listed building remained a focal point for generations to come. The project aimed to sensitively renovate parts of the Abbey whilst modernising its facilities to cater for present-day demands in a building whose origins date back to 1499.

Ironmongery specification

The Modric 3570 lever handle in a bronze Spectra finish was specified throughout the Abbey, as well as a full suite of matching door furniture. This fully co-ordinated range not only provided the desired aesthetic but is also designed to last. The comprehensive 25-year warranty and Quadaxial rose, which is tested up to one million cycles, means the lever handles are perfect for the high foot traffic the Abbey receives.



Public Health & Education Award **SHORTLISTED**

NAIC, Warwick University

Architect Cullinan Studio

Architectural Ironmonger Allgood Plc

Summary

Based in the Professor Lord Bhattacharyya Building at the University of Warwick, the National Automotive Innovation Centre (NAIC) is the largest automotive research facility of its kind in Europe. Designed by Cullinan Studio, the main objective of the NAIC was to unite all the teams' research divisions in one place, while providing an environment that allows ideas to flourish by providing a building that encourages collaboration from the educational spaces to its research areas.

Ironmongery specification

Working on a vast specification for the 17,800m² building, Allgood supplied three hundred Modric door levers and over one hundred Mode pull handles. Along with a co-ordinated access control and door automation system, this delivered peace of mind that it would withstand the high footfall demands placed upon it and allow the building and its users to work together as one.



International Award **WINNER**

Xiqu Centre, Hong Kong

Architect Ronald Lu & Partners

Architectural Ironmonger Key Technologies International Limited

Summary

The Xiqu Centre is a unique, contemporary example of a purpose-built venue around the world, with its mission to preserve, promote and develop the art of Chinese traditional theatre, to nurture the local form of Cantonese opera and to promote other forms of xiqu. The Xiqu Centre also presents the highest-calibre productions of Cantonese opera classics.

The 7-storey building has a total area of 28,164 sqm and houses a 1,075-seat Grand Theatre, a 200-seat Tea House Theatre, 8 professional studios and a seminar hall, all specially designed for different types of xiqu-related functions and activities.

Ironmongery specification

In order to meet the architects' expectations on product performance, Key Technologies carefully studied and understood the users' requirements and consultants' design criteria. Products with independent third party HOKLAS / UKAS accredited laboratories test certification were supplied to correspond with the needs.

Key Technologies went further to sponsor additional fire and insulation tests for the 2-hour fire rated timber doors to BS EN 1634-01 with the appointed door manufacturer as the majority of ironmongery for fire timber doors were only tested to 1 hour in their country of origin.

Judges comments

"A prestigious project where the ironmongery specification stood out as it was evident that it greatly exceeded the stringent performance requirements of the building."



International Award

SHORTLISTED

Z33 Gallery, Belgium

Architect Francesca Torzo Architetto

Architectural Ironmonger izé

Summary

Italian architect Francesca Torzo specifically designed a series of handles for the Z33 gallery in Hasselt, Belgium, a space for contemporary art, design and architecture. The building addresses its historic context, while also being supremely modern. It has a relationship with the street and also turns inwards towards a garden. This dichotomy is reflected in the ironmongery where Torzo wanted to do something different, re-interpreting conventional handles in a new form. The handles are supremely elegant, with a twisted form that is comfortable to hold and a slightly indented thumb position. izé worked closely with the architect to realise exactly the design that she had envisaged.

Ironmongery specification

The bespoke range of items made for this project consists of lever handles, pull handles, window handles and knobs. The handles are supremely elegant, with a twisted form that is comfortable to hold and a slightly indented thumb position. For the Z33 Gallery, the items were made in satin polished nickel plate on brass.

The key points of the designs are 'sharpness in expression, ease in use, pleasure in touch'. The range of items were designed with different but complementary characteristics. The lever handle and window lever handle are slightly bigger than the length of a hand, confident and familiar. In contrast, the straight pull handles on two different scales, one generous in size and the other more domestic. The knob, the small pull handle and the bathroom locking set are like punctuations.





International Award **SHORTLISTED**

The Secretariat, Yangon

Architect RBA Architects + Conservation Consultants

**Architectural
Ironmonger** Key Technologies International Limited

Summary

One of the most significant historic places in Myanmar, the Secretariat covers an area of almost 16 acres at the heart of Yangon. A Victorian-colonial masterpiece, The Secretariat was mostly abandoned in 2005 and left to decay behind locked gates and imposing fences. The plan was to restore the Secretariat's more than 400,000 square feet of space alive with a vibrant mix of tenants that will include museum and art exhibit spaces, cultural and private event spaces, guided tours, as well as retail shops, restaurants and commercial office space.

Ironmongery specification

Key Technologies was commissioned to offer technical advice and to carry out surveys and sourcing for traditional door and window hardware to complement the original design of the Secretariat complex. The task seemed straight forward but when the survey started, the variations appeared overwhelming due to the modification of the building content at different stages over the past 114 years. The products extensively used include custom made parliament hinges, surface bolts, hasp and staples in RAL7021 finish.



Product Design & Innovation Mechanical Award

WINNER

Complete Sealing System for Sliding Doors

Norseal Ltd

It is a popular conception that it is impossible to seal a sliding door: but this is no longer true. Sliding doors are becoming an increasingly popular choice, saving floor space and offering a sleek, flexible, minimalist design choice. They are particularly popular for ensuite bathrooms which need sealing, for obvious reasons.

Norseal's Complete Sealing System for sliding doors now automatically seal the majority of sliding doors with any kind of hardware configuration and regardless of door and frame construction.

The system is a self-levelling, unobtrusive sliding door drop seal that effectively provides smoke and draft protection as well as giving the best possible acoustic performance for sliding doors, offering sound reduction performance of up to 55dB Rw. It does this by providing automatic sealing top and bottom, and uninterrupted vertical sealing for most latched or

unlatched sliding doors, including pocket doors.

It works beautifully on timber, metal and even glass doors with zero-threshold, barrier-free access and minimal opening and closing forces.

It is suitable for sliding doors up to a size of 2000 x 3000mm in size and can seal the door on four sides without affecting the appearance. The sealing system is mounted on the door surface so it is concealed by the wall and lintel when closed. Only the lower sealing level remains visible, covered with a decorative aluminium screen. The system can be used on new doors but is also suitable for retrofitting.

Judges comments

"It is refreshing to see an innovative method of providing an effective solution to overcome this need in the market place - most impressive!"



Product Design & Innovation Mechanical Award **HIGHLY COMMENDED**

Fat Collection d line

The Fat Collection is a new exploration for d line that disrupts a product category otherwise considered straight forward and conservative. This is why making a bold statement in both silhouette and colour palette could only happen in partnership with one of the greatest designers of our time. This allows d line to stick to core construction principles of no-compromise craftsmanship and quality, while challenging ourselves to think and work in new ways with traditional hardware.

Having applied what Tom calls a 'fat edge' or 'fat profile' to several different objects in development at Tom Dixon Studio, the designer had already been using the word 'fat' to imply generosity and softness of form. So, with the studio's move into architectural ironmongery, and with the same 'inflation' process applied to a regular handle, the name again relates. The result lacks any trace of sharpness or angularity and is a collection of pumped-up pieces that are simply 'fatter' than the norm.

The collection comprises a lever handle, key escutcheon and thumb turn, as well as a door knocker and door stop. Like the rest of the d line portfolio, each piece is minimalist enough to be timeless in its design, its beauty coming from its rounded profile and inflated silhouette, rather than from superfluous details. The pieces are enduringly crafted in the highly resilient AISI 316 stainless steel and enhanced by a tight edit of colour finishes for different expressions in aesthetics.

New collections tend to be launched in stainless steel, both for its practicality and universality. But when Tom Dixon Studio lined up finish and colour samples for Fat, they loved them all. Satin stainless steel is joined by polished brass, as well as PVD Black and Electric blue – the team saw that with this palette of materials and colours in play, the collection addressed many different project types because of the way each changes the character of the pieces.



Product Design & Innovation Mechanical Award **SHORTLISTED**

DC6113 - Slimline transom door control

**ASSA ABLOY Opening Solutions
UK & Ireland**

A slimline transom door closer that uniquely helps to meet BS 8300 and Approved Document M, ensuring buildings are accessible and inclusive to all.

Many transom door closers only achieve BS 8300 and Approved Document M at EN power size 2, and are not compliant on heavier doors. The DC6113 uniquely helps to achieve BS 8300 and Approved Document M at EN power size 3, meaning heavier doors are easier to open, but still safely close. It's also the slimmest profile on the market, perfect for aluminium slimline door sections allowing architects and their clients to achieve a maximum glazed aspect design brief.



Product Design & Innovation Mechanical Award **SHORTLISTED**

UNION CodeGUARD5

**ASSA ABLOY Opening Solutions
UK & Ireland**

The CodeGUARD5 product has been designed specifically to offer an access control solution through a push button keypad, but with assured security features such as over 2,000 available combinations, a stainless steel protective shield, both through fixings, 20mm deadlocking latch, security strike box and auto-firing security pin. The auto-firing security pin is another layer of security where if the unit is forcibly removed from the door face completely, the pin will fire and deadlock the latch to stop any manipulation of the follower mechanism to override the lock case.

The CodeGUARD5 is the first and only high security push button lock to meet grade 5 of the BS8607 standard and proudly displays the BS kitemark. The product combines the convenience of access control with assured mechanical security and an auto-deadlocking latch so when a door shuts, it is secure.

Product Design & Innovation Electronic Award **WINNER**

Virtual Engineer Strand Technologies Limited

Virtual Engineer is an online dashboard that can be used on-site, or remotely, to alert and identify a problem and allow common on-site issues to be resolved. The dashboard has been devised specifically for the management of entrances and has two gateway user levels; one for non-technical staff who have immediate responsibility for looking after the site and another, more detailed interface for estates and facilities managers, which provides greater technical detail and remote management capability.

It is a unique connectivity solution to enable complete remote monitoring and control of automatic pedestrian doors, access controlled doors, gates, barriers and shutters. User friendly "traffic light" dashboard empowers all support personnel with minimal training and to facilitate rapid fault finding and resolution. Significant reduction in carbon footprint by reducing unnecessary site visit through accurate remote diagnostics.

Judges comments

"This product has innovation written all over it. It provides an effective solution which has the benefit of remote fault finding coupled with helping to reduce carbon footprint".





Product Design & Innovation Electronic Award **SHORTLISTED**

Neo cylinder SALTO Systems

The compact SALTO Neo Cylinder is designed for doors where fitting an electronic escutcheon is not possible or required and can be installed on standard doors, server racks, gates, cabinets, electric switches, sliding doors and more. It's available in an extensive range of models to suit almost any kind of door – from Europe to ASIA to the Americas. The SALTO Neo cylinder delivers an easy-to-use electronic locking platform that integrates all of your physical security needs through smart, wireless and battery-operated smart cylinders, giving you all the latest user access information for virtually any doors in your facility.

Because the SALTO Neo Cylinder is compatible with SALTO SVN, SALTO BLUEnet Wireless and the SALTO KS – Keys as a Service – cloud-based technology, it can be switched to any of SALTO's technology platforms at any time without changing hardware. It also includes SALTO SVN-Flex technology, which increases the capability, efficiency and reliability of SALTO SVN, yielding better security, control and convenience for users and installations alike. This allows businesses to decide which technology fits better with their security, operational and IT needs.

SALTO JustIN Mobile technology is also on board every cylinder. This gives users and system administrators the capability to send or receive a mobile key to open any door or gate fitted with a SALTO Neo Cylinder via their iOS or Android Bluetooth or NFC-enabled smartphone. This adds incredible convenience and efficiency for end-users and JustIN mobile app capability also complements use of SALTO's other management platforms: SALTO SPACE data-on-card management software or the SALTO KS cloud solution.



Product Design & Innovation Electronic Award **SHORTLISTED**

KL1100 Kitlock range Codelocks Ltd

The KL1100 RFID is a smart card operated lock designed for both public and private lockers. Users can simply lock and unlock the KL1100 RFID at the touch of a card. Public Function is suitable for short-term multi-occupancy applications such as gyms, hotels and hospitals. Private Function is best for users that require regular access to a personal locker, such as students or employees.

With up to 100,000 operations and 20 User Codes, the KL1100 KeyPad boasts the same slimline design and powered latch as the KL1100 RFID but maintains the traditional code access keypad and features found in classic KitLock by Codelocks products. The KL1100 KeyPad's powered latch enables the user to close the locker door with a gentle push. As the latch unit houses the battery, Codelocks was able to design a slimmer front plate and really focus on aesthetics as well as functionality.



Product Design & Innovation Electronic Award **SHORTLISTED**

DC300G-HF Electro-mechanical Hold-Open Free Swing Door Control ASSA ABLOY Opening Solutions UK & Ireland

The DC300G-HF has the flexibility to change between hold-open and free-swing on-site, in seconds. Uniquely it offers variable power EN 3-6 retaining low opening forces on larger doors, for ease of use. And it has full and unrivalled certification, regardless of operating mode or fitting configuration.

This unrivalled combination of on-site flexibility, unique performance and full certification, makes the DC300G-HF the best in class electro-mechanical rack and pinion door control, bar none. In addition, the Soft-Motion release function improves the usability of the product when being released manually or automatically via the building's fire alarm system.

GAI MEMBERS DIRECTORY 2022

GAI membership is open to any company complying with the GAI code of conduct and demonstrating an active pledge to raise the standards of the industry.

* Directory based on 2022/23 subscription year. For the most up to date listing, please visit www.gai.org.uk.

A

3V Architectural Hardware Ltd

Unit F, Silwood Park, Buckhurst Road,
Ascot, SL5 7PW

GAI full member

T: +44 (0) 1344 623 600

www.3vahl.com

A C Leigh Ltd

61-67 St Benedicts Street, Norwich,
NR2 4PD

GAI full member

T: +44 (0) 1603 216 500

www.acleigh.co.uk

Abdulaziz & Saad Al Moajil Co.

Al-Khafyaji Building Showroom 2,
Opposite Karama Fire Station,
Al Karama, 117414, UAE

GAI full member

T: +971 (0)4 335 5587

www.almoajilholding.com

Abus UK Ltd

Unit 8, Third Way Corner,
Avonmouth, Bristol, BS11 9HL

GAI associate member

T: +44 (0) 117 204 7000

www.abus-uk.com

Access Hardware Ltd

35 Monkpath Business Park,
Highlands Road, Shirley, Solihull,
B90 4NZ

GAI full member

T: +44 (0)121 667 8054

www.accesshardware.co.uk

Access2

Unit 35, North Tyne Industrial Estate,
Longbenton, Newcastle Upon Tyne,
NE12 9SZ

GAI full member

T: +44 (0)191 215 0530

www.access2.com

Acorn Architectural Ironmongery Ltd

Units 9 & 10, Crane Business
Estate, Cambridge Road, Milton,
Cambridge, CB24 6AZ

GAI full member

T: +44 (0) 1223 423 773

www.acornironmongery.com

ADI'n Limited

Room 03, 22/F., Metro Centre II,
21 Lam Hing Street, Kowloon Bay,
HONG KONG

GAI affiliate member

T: +852 2111 3574

www.adi-n.com

Ahram Security Group

10th of Ramadan, Industrial Zone A1,
1562, EGYPT

GAI affiliate member

T: +20 55 441 0410

www.ahramsg.com

Allgood Plc

63-83 Brearley Sreet, Birmingham,
B19 3NT

GAI full member

T: +44 (0) 121 359 4415

www.allgood.co.uk

Aqfal Trading & services Co W.L.L

PO Box 80115, Salwa Road, Doha,
QATAR

GAI full member

T: +974 (0)4 435 8642

www.aqfalqatar.com

Aspex Scotland

39 Deerdykes View, Westfield,
Cumbernauld, G68 9HN

GAI full member

T: +44 (0) 1236 720 061

www.aspex-uk.co.uk

Aspex UK Ltd

Unit E, Blaby Industrial Estate,
Winchester Avenue, Blaby, Leicester,
LE8 4GZ

GAI full member

T: +44 (0) 116 278 3506

www.aspex-uk.co.uk

ASSA ABLOY Global Solutions Singapore Pte Ltd

60 Macpherson Road,
BLK 1 # 08-08, Siemens Centre,
348615, SINGAPORE

GAI full member

T: +65 6880 0000

www.assaabloy.com

ASSA ABLOY Hong Kong Ltd

Suite 1901, 19/F, Tower 3,
China Hong Kong City,
33 Canton Road, Tsim Sha Tsui,
HONG KONG

GAI full member

T: +852 9036 5325

www.assaabloy.com

ASSA ABLOY India Pvt Ltd

Ecostar, 12th Floor, Vishweshwar
Nagar, Goregaon East, Mumbai,
400063 INDIA

GAI full member

T: +91 12 4440 7067

www.assaabloy.com

ASSA ABLOY Opening Solutions Middle East

Jebel Ali Industrial Area 1,
1 Street 11B,
P.O. Box: 37765, UAE

GAI full member

T: +971 (0)4 880 4888

www.assaabloy.com

ASSA ABLOY Opening Solutions New Zealand

5 Armstrong Road, Albany,
North Shore, Auckland, 632,
NEW ZEALAND

GAI full member

T: +64 9415 7111

www.assaabloy.com

ASSA ABLOY Opening Solutions UK & Ireland

Portobello Works, School Street,
Willenhall, WV13 3PW

GAI full member

T: +44 (0) 1902 366 911

www.assaabloyuk.com



Allegion (UK) Ltd
35 Rocky Lane, Birmingham, B6 5RQ
GAI full member
T: +44 (0)121 380 2400
www.allegion.com

GAI MEMBERS COMPANY

ASSA ABLOY South Africa

176 Progress Road, Technikon,
Roodeport, 1724,
SOUTH AFRICA

GAI full member

T: +27 21 531 0770

www.assaabloy.co.za

Astra Door Controls Ltd

Unit 4, Astra Business Centre, Roman
Way, Preston, PR2 5AP

GAI associate member

T: +44 (0)1772 796 901

www.astradoorcontrols.com

Automatic Door Suppliers Association (ADSA)

Office 13, Tamworth Enterprise
Centre, Philip Dix House,
Corporation Street, Tamworth,
B79 7DN

GAI associate member

T: +44 (0)1827 216 136

www.adsa.org.uk

Axim Architectural Hardware

Unit 5, The Willow Business Centre,
17 Willow Lane, Mitcham, CR4 4NX

GAI associate member

T: +44 (0)20 8685 9685

www.axim.co.uk

B

B G Romeril & Co

Dumaresq Street, St Helier,
JE1 3UT

GAI full member

T: +44 (0)1534 738 806

www.romerils.com

B.S.C. Building Materials Supply Company Limited

19th Floor, Sino Favour Centre,
1 on Yip Street, Chai Wan,
HONG KONG

GAI associate member

T: +852 25102328

www.bschk.com

Barry Bros Security Ltd

121/123 Praed Street, Paddington,
London, W2 1RL

GAI full member

T: +44 (0)20 7262 9009

www.barrybros.com

Berkshire Fixings Ltd (BFL)

Unit 37, Longshot Lane Industrial
Estate, Longshot Lane, Bracknell,
RG12 1RL

GAI affiliate member

T: +44 (0)1344 428 838

www.b-f-l.biz

BJ Waller Ltd

20 Wilburton Road, Strettham, Ely,
CB6 3LN

GAI full member

T: +44 (0)1353 647 111

www.bjwaller.co.uk

Bluseal Limited

Unit P, Blackpole East, Blackpole
Road, Worcester, WR3 8SG

GAI affiliate member

T: +44 (0)1905 750 960

www.blusealdoors.co.uk

Borg Locks Ltd

9 Upminster Trading Park, Warley
Street, Upminster, RM14 3PJ

GAI full member

T: +44 (0)1708 225 700

www.borglocks.com

Boss Door Controls Ltd

4 Ruthfield Square,
Brucefield Industry Park, Livingston,
EH54 9BU

GAI full member

T: +44 (0)1506 467 477

www.bosdoorcontrols.com

BPS DORLINE

Unit 5, Hermes Close, Leamington
Spa, CV34 6NJ

GAI full member

T: +44 (0)1926 332 620

www.bandps.co.uk

Branch BMN Ltd

BMN House, 153 Dollman Street,
Birmingham, B7 4RS

GAI full member

T: +44 (0)121 333 4120

www.branchbmn.co.uk

Brass Works Ltd

52-56 Standard Road, London,
NW10 6EU

GAI full member

T: +44 (0)20 3884 2084

www.brass-works.co.uk

Brights Locksmiths Ltd

41 Alexandra Street, Southend,
SS1 1BW

GAI affiliate member

T: +44 (0)1702 346 274

www.brights-locksmiths.co.uk

Broughtons of Leicester Ltd

The Old Cinema, 69 Cropston Road,
Ansley, LE7 7BP

GAI full member

T: +44 (0)116 234 1888

www.broughtons.com

C

C&W Berry Ltd

Wellfield Sawmills, King Street,
Leyland, PR25 2LE

GAI full member

T: +44 (0)1772 431 216

www.cwberry.com

Caldwell Wright Architectural Ironmongers

Unit 12, Etna Court, Middlefield
Industrial Estate, Falkirk, FK2 9EQ

GAI full member

T: +44 (0)1324 611 211

www.caldwellwright.co.uk



Carlisle Brass Ltd

Parkhouse Road, Kingstown,
Carlisle, CA3 0JU

GAI full member

T: +44 (0)1228 511 770

www.carlislebrass.com

Carpentry Trade Solutions (Pty) Ltd

PO Box 920, Malmesbury,
Western Cape, 1724,
SOUTH AFRICA

GAI affiliate member

T: +27 72 446 5581

www.c-t-s.co.za

CBS (Midlands) Ltd

Kenilworth House, 118 Stourbridge
Road, Dudley,
DY1 2DP

GAI full member

T: +44 (0)1384 254 015

www.cbsmidlandsltd.co.uk



CES Security Solutions Ltd

Unit 6, Northpoint Business
Estate, Enterprise Close,
Medway City Estate, Rochester,
ME2 4LX

GAI full member

T: +44 (0)1634 713 369

www.cessecurity.co.uk

Citation Ltd

Kings Court, Water Lane, Wilmslow,
SK9 5AR,

GAI associate member

T: +44 (0)345 234 0404

www.citation.co.uk

Coburn Sliding Systems Ltd

Peel House, London Road, Morden,
SM4 5BT

GAI associate member

T: +44 (0)20 8545 6680

www.coburn.co.uk

Codelocks Ltd

Albury Way, Greenham Business
Park, Newbury, RG19 6HW

GAI full member

T: +44 (0)1635 239 645

www.codelocks.com

GAI MEMBERS COMPANY

Commy Hardware Co. Ltd

No.15, G/F, Golden Industrial Building, 16-26 Kwai Tak Street, Kwai Chung, HONG KONG

GAI full member
T: +852 2427 4131
www.commy.hk

Consort Middle East LLC

PO Box 19186, 3903-04 Building, BB2, Mazaya Business Avenue, JLT, Dubai, UAE

GAI subsidiary member
T: +971 4 446 0999
www.consortme.com

Cooke Brothers Ltd

Northgate, Aldridge, Walsall, WS9 8TL

GAI full member
T: +44 (0)1922 740 001
www.cookebrothers.co.uk

Cookson Hardware

Armstrong House, Swallow Street, Stockport, SK1 3LG

GAI full member
T: +44 (0)161 480 2388
www.cooksonhardware.com

Cotswold Doors Ltd

Unit 1, Whelford Industrial Estate, Whelford Road, Fairford, Gloucestershire, GL7 4DT

GAI full member
T: +44 (0)1285 863 222
www.cotswolddoors.co.uk

County Architectural Ironmongery Ltd

42 Tenier Road, Moulton Park Industrial Estate, Northampton, NN3 6AX

GAI full member
T: +44 (0)1604 790 709
www.cai-ltd.co.uk

Croft Architectural Hardware Ltd

23 Lower Lichfield Street, Willenhall, WV13 1QQ

GAI associate member
T: +44 (0)1902 606 493
www.croft-arch.co.uk

Crroma Locksmiths and Security Solutions Ltd

Unit 7 & 8, Fulcrum 4, Solent Way, Hampshire, PO15 7FT

GAI full member
T: +44 (0)1489 566 100
www.cssgplc.com

D

D.A.D UK Ltd

The Rake Factory, Church Road, Kent, TN25 6SA

GAI affiliate member
T: +44 (0)1233 630 406
www.dadgroup.co.uk

D&E Architectural Hardware Ltd

17 Royce Road, Carr Road Industrial Estate, Peterborough, PE1 5YB

GAI associate member
T: +44 (0)1733 896 123
www.dande.co.uk

Davis Architectural Services Ltd

Unit 1, The Ropery Business Park, 48 Anchor & Hope Lane, London, SE7 7RX

GAI associate member
T: +44 (0)20 8853 5997
www.dnpnet.com

Decco Limited

Votec House, Hambridge Lane, Newbury, RG14 5TN

GAI full member
T: +44 (0)1635 556 600
www.decco.co.uk

Deltaprise Sdn Bhd

4 Jalan 2/109E, Deas Business Park, Taman Desa, Kuala Lumpur, 58100 MALAYSIA

GAI full member
T: +60 3 7982 8808
www.deltaprise.com.my

G Johns AND SONS ARCHITECTURAL IRONMONGERY

www.gjohns.co.uk - 020 8360 7771
Unit D Westside Business Centre, Harlow, Essex, CM19 5SX
Established 1888 / Incorporated 1943



NORSEAL
SPECIALIST SEAL SOLUTIONS

norseal.co.uk

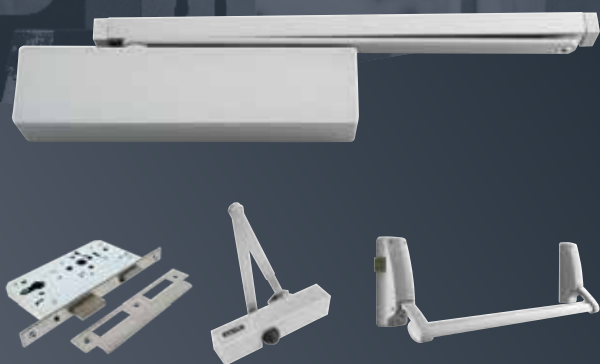
sales@norseal.co.uk

01661 830088



Briton

THE DOOR CONTROL EXPERTS



Briton is the name to trust.

We pride ourselves on producing high quality, highly engineered door control products designed to endure constant use, in busy environments the world over. Take a look at our wide range and protect what you value most.

BRITON.CO.UK
TRUSTED SINCE 1907

Tel. **0330 8080 617**



ALLEGION 

DG Supplyline Ltd

122-124 Prince Avenue, Westcliff,
Westcliff-on-sea, SSO ONW

GAI affiliate member

T: +44 (0)1702 351 911

www.dgsupplyline.co.uk

Door and Hardware Institute (DHI)

2001 K Street NW, 3rd Floor North,
Washington, DC 20006, USA

GAI full member

T: +202 367 1134

www.dhi.org

Didon General Trading LLC

Office No. 12, Oasis Centre,
Shiek Zayed Road,
PO Box 6923, UAE

GAI full member

T: +971 (0)4 324 3228

www.didon.ae

dline Eisenware Ltd

17 Key Business Park, Kingsbury
Road, Birmingham, B24 9PT

GAI full member

T: +44 (0)121 373 4488

www.dline.com

Dockerills (Brighton) Ltd

3A/3B/3C Church Street, Brighton,
BN1 1UJ

GAI full member

T: +44 (0)1273 607 434

www.dockerills.co.uk

DOM-UK Ltd

Unit 12, Cleton Street Business Park,
Cleton Street, Tipton,
DY4 7TR

GAI full member

T: +44 (0)121 569 7790

www.ronis-dom.co.uk

Doorfit Products Ltd

Ickneild House, 90 Heaton Street,
Hockley, Birmingham,
B18 5BA

GAI full member

T: +44 (0)121 523 4171

www.doorfit.co.uk

dormakaba Gulf FZE

PO Box 17268, Plot No.
S 20135, Road No. SW 301 G,
Jebel Ali Free Zone South, Dubai,
17268, UAE

GAI full member

T: +971 480 20400

www.dormakaba.com

dormakaba Hong Kong Limited

Rm 701, Technology Plaza,
651 King's Road, North Point,
HONG KONG

GAI subsidiary member

T: +852 2503 4632

www.dormakaba.com/hk

dormakaba India Private Ltd

Mahindra World City, Plot No.
48/3, 8th Avenue, Anjur Village,
Chengalpattu Talu, Kancheepuram
District, Tamil Nadu, 603002 INDIA

GAI full member

T: +91 44 67 400 200

www.dorma.com/in

dormakaba Ireland Ltd

PO Box 1050, Maynooth,
IRELAND

GAI subsidiary member

T: +353 1 295 8280

www.dorma.ie

dormakaba UK Ltd

Wilbury Way, Hitchin,
SG4 0AB

GAI full member

T: +44 (0)1462 477 600

www.dormakaba.com

E

E & SW Knowles Co. Ltd

Moor Lane Trading Estate, Perrywell
Road, Birmingham, B6 7AT

GAI affiliate member

T: +44 (0)121 356 7046

www.knowlesdoors.co.uk

e-Hardware Ltd

Unit 1A, Teybrook Farm,
Brook Road, Great Tey, Colchester,
CO6 1JE

GAI full member

T: +44 (0)1206 213 499

www.e-hardware.co.uk

Ecco Architectural Hardware Ltd

Parkway Business Centre,
Ballymount, Dublin, 24, IRELAND

GAI full member

T: +353 (0)1 429 9399

www.eccohardware.com

GAI MEMBERS COMPANY

Ectratech Trading LLC
Next To Al Abbar Glass, Manama
Street, Al Aweer, Dubai, 3765, UAE
GAI affiliate member
T: +971 4 333 3963
www.ectratech.com

**Elite Architectural
Ironmongery Ltd**
29/31 Lower Loveday Street
Birmingham, B19 3SB
GAI full member
T: +44 (0)121 359 6001
www.eliteai.co.uk

Em-B Solutions Ltd
42-44 Burley Road, Leeds,
LS3 1JX
GAI full member
T: +44 (0)113 245 9559
www.em-b.co.uk

Eurobond Doors Ltd
Wentloog Corporate Park,
Wentloog Road, Cardiff,
CF3 2ER
GAI full member
T: +44 (0)2920 361 111
www.eurobonddoors.co.uk

**Eurodesigns General Trading
LLC**
WH 3, Galari Warehouse Complex,
13th Street, Al Qusais Industrial Area
2, Al Ausais, Dubai, UAE
GAI affiliate member
T: +971 (0)4 258 6577
www.eurodesigns.in

F

F P Herting & Son Plc
Frederick House, 25 Armstrong Way,
Great Western Industrial Park,
Southall, UB2 4SD
GAI full member
T: +44 (0)20 8606 7000
www.hertings.com

F R Scott Limited
Canning Street, Hull, HU2 8QS
GAI full member
T: +44 (0)1482 324 731
www.frscott.co.uk

Farmer Bros & J D Beardmore
319-321 Fulham Road, London,
SW10 9QL
GAI full member
T: +44 (0)20 7351 5444
www.beardmore.co.uk

Fire DNA Ltd
Unit 1 B/A, Star Road Trading
Estate, Star Road, Partridge Green,
Horsham, RH13 8RA
GAI associate member
T: +44 (0)7821 336 759
www.fire-dna.com

**Fire Door Inspection Scheme
Ltd (FDIS)**
C/O BWF, The Building Centre,
26 Store Street, London,
WC1E 7BT
GAI full member
T: +44 (0)844 801 1518
www.fdis.co.uk

Fireco Ltd
5 Grange Road, Southwick,
Brighton, BN42 4DQ
GAI affiliate member
T: +44 (0)1273 320 650
www.fireco.uk

**Finishes and Interiors Sector
(FIS)**
Olton Bridge, 245 Warwick Road,
Solihull, B92 7AH
GAI associate member
T: +44 (0)121 707 0077
www.thefis.org



Forza Doors Ltd
24A/24C Star Road Trading
Estate, Star Road, Partridge
Green, Horsham, RH13 8RA
GAI associate member
T: +44 (0)1403 711 126
www.forza-doors.com

Franchi Plc
278 Holloway Road, London,
N7 6NE
GAI full member
T: +44 (0)20 7607 2200
www.franchi.co.uk

Frank Allart & Co Ltd
15-35 Great Tindal Street,
Ladywood, Birmingham,
B16 8DR
GAI full member
T: +44 (0)121 410 6000
www.allart.co.uk

**Franz Schneider Brakel GmbH
+ Co KG**
Nieheimer Strasse 38, 33034,
GERMANY
GAI full member
T: +49 52 7260 8201
www.fsb.de

**Freeman and Pardoe
Engineering Ltd**
Tything Road, Arden,
Forest Industrial Estate, Alcester
Warwickshire, B49 6ES
GAI associate member
T: +44 (0)1789 762 575
www.freemanandpardoe.com

Frelan Hardware Ltd
Unit 10, Mitcham Industrial Estate,
Streatham Road, Mitcham, CR4 2AP
GAI full member
T: +44 (0)20 8648 1500
www.frelan.co.uk

Frisco (UK) Sales Ltd
Unit 14, Pindar Road, Hoddesdon,
EN11 0DE
GAI associate member
T: +44 (0)1992 443 010
www.frisco.co.uk

Fulham Brass Ironmongery Ltd
905 Fulham Road, London,
SW6 5HU
GAI full member
T: +44 (0)20 7736 3246
www.fulhambrass.com

G

G Johns & Sons Ltd
Unit D, West Side Business Centre,
Flex Meadow, Harlow, CM19 5SR
GAI full member
T: +44 (0)20 8360 7771
www.gjohns.co.uk

GE Door Manufacturing Ltd
Forge Industrial Estate, Maesteg,
CF34 0AZ
GAI full member
T: +44 (0)1656 730 070
www.gedoormanufacturing.co.uk

Gem Security Systems Ltd
Unit 1, Enterprise Trade Centre,
Roman Farm Road, Hengrove,
BS4 1UN
GAI full member
T: +44 (0)117 978 8676
www.gemsec.co.uk

**George Boyd Architectural
Ironmongery**
300 Crownpoint Road, Glasgow,
G40 2UJ
GAI full member
T: +44 (0)1293 539 919
www.george-boyd.co.uk

GEZE India Private Limited
MF2 & 3, Guindy Industrial Estate,
Ekkattuthangal, 600 097 Chennai,
INDIA
GAI affiliate member
T: +91 44 4061 6909
www.geze.in/hi/

GEZE Middle East FZE
PO Box 17903, Jebel Ali Free
Zone, Dubai, UAE
GAI full member
T: +971 (0)4 883 3112
www.geze.ae

GEZE South Africa Pty Ltd
PO Box 7934, Gauteng, 1685,
SOUTH AFRICA
GAI full member
T: +27 8 3455 7900
www.geze.co.za

GEZE UK Ltd
Blenheim Way, Fradley Park,
Lichfield, WS13 8SY
GAI full member
T: +44 (0)1543 443 000
www.geze-uk.com

GID Ltd
1/FChuang's Enterprise Building, 382
Lockhart Road, Wanchai, HONG
KONG
GAI affiliate member
T: +852 2572 9800
www.gid.com.hk

GAI MEMBERS COMPANY

Glory Top Architectural Hardware Ltd

Unit 1603-5,8 Jordan Road,
Kowloon, HONG KONG

GAI affiliate member
T: +852 3583 8333
www.glorytop.com.hk

Glutz UK Ltd

11 Finch Drive, Kestrel Park,
Springwood Industrial Estate,
Braintree, CM7 2SF

GAI full member
T: +44 (0)1376 348 808
www.glutz.co.uk

Gretsch Unitas Ltd

5 Spiifire Close, Coventry Business
Park, Coventry,
CV5 6UR

GAI full member
T: +44 (0)330 094 5552
www.g-u.com

Guardian Lock & Engineering Co Ltd

Imperial Works, Wednesfield Road,
Willenhall, WV13 1AL

GAI associate member
T: +44 (0)1902 635 964
www.imperiallocks.co.uk

H

Häfele (Thailand) Ltd

57 Soi Sukhumvit 64, Sukhumvit
Road, Phrakonong Tai, Phrakonong,
Bangkok, 10260, THAILAND

GAI full member
T: +66 27 287 196
www.hafele.com

Häfele (UK) Ltd

Swift Valley Industrial Estate, Rugby,
CV21 1RD

GAI full member
T: +44 (0)1788 542 020
www.hafele.co.uk

Häfele GmbH & Co KG

C/o GEAP Traders LLC, 24/F
U-Bora Tower, Business Bay, Dubai,
UAE

GAI full member
T: +971 (0)4 284 4406
www.hafele.ae

Häfele Hardware Technology (China) Co. Ltd

No.Jia23, You Hua Road Area B,
Tianzhu Airport Industrial Zone,
Beijing, 101318, CHINA

GAI full member
T: +86 10 8048 2686
www.hafele.com.cn

Häfele India PVT Ltd

Office No.3, Building 'A' Beta,
Kanjurmarg (East), 400042, INDIA

GAI full member
T: +91 22 6142 6100
www.hafeleindia.com

Häfele Ireland Ltd

Kilcoole Industrial Estate,
Creowen Road, Creowen, Wicklow,
AC63 KC58, IRELAND

GAI full member
T: +353 (0)1 287 3488
www.hafele.ie

Halspan Ltd

Unit 10, M11 Business Link,
Parsonage Lane, Essex, Stansted,
CM24 8GF

GAI full member
T: +44 (0)3300 563 836
www.halspan.com

Hanson & Beards Ltd

Springhall Works, Springhall Grove,
Halifax, HX2 0BU

GAI full member
T: +44 (0)1422 306 830
www.hansonandbeards.co.uk

Harbrine Ltd

27/31 Payne Road, London,
E3 2SP

GAI full member
T: +44 (0)20 8980 8000
www.harbrine.co.uk

Hardware Supply Co. (M'bro) Ltd

The Faulkner Building, North
Ormesby Road, Middlesbrough,
TS4 2AP

GAI full member
T: +44 (0)1642 243 403
www.hardwareupply.co.uk

Haroon Engg. Mat. Marketing CO.LLC

Shop #1, Sanitar Systems Complex,
Dejla Street / 21st Street, Off King
Faisal Road Industrial Area # 4,
Sharjah, UAE

GAI full member
T: +971 (6) 533 7338
www.haroonco.com

Heiken Building Material Consortium Sdn Bhd

5 Jalan Utama Harmoni, Bentong
Pahang, 28700, MALAYSIA

GAI full member
T: +609 2 221 313
www.heiken.com.my

Henry Squire & Sons Ltd

Unit 2 Mercury, Hilton Cross Bus.
Park, Cannock Road, Featherstone,
Wolverhampton, WV10 7QZ

GAI associate member
T: +44 (0)1902 308 052
www.squirelocks.co.uk

HEWI (UK) Ltd

Holm Oak Barn, Stoke Road, Hoo.
Rochester, ME3 9NT

GAI full member
T: +44 (0)1634 258 200
www.hewi.co.uk

Hi-tec Architectural Ironmongery Ltd

Unit 3a, Northbrook Road,
Gloucester, GL4 3OP

GAI full member
T: +44 (0)1452 386 444
www.hi-tecironmongery.com

Higrade Limited

Unit 508, 5/F, Eastern Harbour
Centre, 28 Hoi Chak Street, North
Point, HONG KONG

GAI full member
T: +852 2911 0086
www.higrade.com.hk

HIPS Architectural Ironmongery Ltd

Unit 100, Morgan Close, Willenhall,
WV12 4LH

GAI full member
T: +44 (0)1902 636 400
www.hipsarchitecturalironmongery.co.uk

HOPPE (UK) Ltd

Gayley Park, Gravelly Way,
Standeford, Wolverhampton, WV10
7GW

GAI full member
T: +44 (0)1902 484 400
www.hoppe.co.uk

HOPPE AG GCC

LOB 15 - Office 305,
PO Box 261833,
Jebel Ali Free Zone, Dubai, UAE

GAI full member
T: +971 (0)4 887 0058
www.hoppe.com

Hormann Middle East and Africa FZE

Street N406, Plot MO 0203, Jebel
Ali Free Zone North, Dubai, UAE

GAI full member
T: +971 (0)4 805 3600
www.hormann.ae

Ian Firth Hardware Ltd

Lady Ann House,
Shaw Cross Business Park,
Dewsbury, WF12 7RD

GAI full member
T: +44 (0)1924 438 122
www.ianfirth.co.uk

Instinct Hardware

165 Fordhouse Lane, Stirchley,
Birmingham, B30 3AG

GAI associate member
T: +44 (0)121 459 2358
www.instincthardware.co.uk

Intec Systems Ltd

Flat 1, 43 Tyrrell Road, London
SE22 9NE

GAI associate member
T: +44 (0)1254 667 106
www.intec-systems.co.uk

GAI MEMBERS COMPANY

Integrated Doorset Solutions Ltd

Ovi House, Ratcher Way, Mansfield, NG19 0FS

GAI associate member

T: +44 (0)1423 340 930

www.integrateddoorsets.com

Intelligent Door Solutions

Oxclose Park Road North, Sheffield, S20 8GN

GAI full member

T: +44 (0)300 300 0020

www.intelddoors.co.uk

Interior Hardware Ltd

Aspec House, Middlemore Lane, Aldridge, WS9 8SP

GAI full member

T: +44 (0)1922 451 555

www.interiorhardware.co.uk

Interlock Hardware Ltd

Monaloe House, Clonkeen Road, Deansgrange, IRELAND

GAI subsidiary member

T: +353 1 289 8500

www.interlock.ie

International Fire Consultants Ltd

Park Street Business Centre, 20 Park Street, Princes Risborough, Buckinghamshire, HP27 9AH

GAI full member

T: +44 (0)1844 275500

www.ifcgroup.com

IRM Bristol Limited

Units 1-2, Armstrong Court, Great Western Business Park, Armstrong Way, Yate, BS37 5NG

GAI full member

T: +44 (0)121 459 2358

www.irm-bristol.co.uk

Ironmongery Direct Ltd

Unit 3 & 4, Scimitar Park Industrial Estate, Courtald Road, Basildon, SS13 1ND

GAI full member

T: +44 (0)1268 723 000

www.ironmongerydirect.com

Ironmongery Innovations Ltd

59 High Street, Gravesend, DA11 0BB

GAI full member

T: +44 (0)1474 566 660

www.ironmongeryinnovations.co.uk

Ironmongery World (UK) Ltd

Unit 31B, Albion Mills, Albion Road, Greengates, Bradford, BD10 9TQ

GAI affiliate member

T: +44 (0)1274 610 511

www.ironmongeryworld.com

ize Ltd

Unit 274, Riverside Business Centre, 168 Haldene Place, London, SW18 4UQ

GAI full member

T: +44 (0)20 7384 3302

www.ize.info

J

J&P Hardware Limited

Unit 30, Invincible Drive, Armstrong Industrial Park, Newcastle Upon Tyne, NE4 7HX

GAI full member

T: +44 (0)191 226 0476

www.jphardware.co.uk

James Gibbons Format Ltd

11-13 Jubilee Parkway, Jubilee Business Park, Derby, DE21 4BJ

GAI full member

T: +44 (0)1332 346 521

www.jgf.co.uk

Jardine Engineering Corporation Ltd

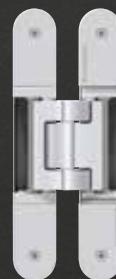
5/F, Tower A, Manulife Financial Centre, 223-231 Wai Yip Street, Kowloon, HONG KONG

GAI full member

T: +852 2807 1717

www.jec.com

TECTUS® THE COMPLETELY CONCEALED HINGE SYSTEM



TECTUS®

-) high load capacities up to 300 kg
-) maintenance-free slide bearing technology
-) three-dimensional adjustability
-) opening angle 180°
-) wide variety of finishes

certifire

www.simonswerk.co.uk

GAI MEMBERS COMPANY

**Jarsen Distribution
T/A Proline Architectural
Hardware**
Unit 10, Jamestown Industrial Centre,
Jamestown Road, Inchicore, Dublin
IRELAND
GAI full member
T: +353 1453 6633
www.prolinehardware.ie

JEB Supplies Ltd
Duchy Business Centre, Wilson Way,
Pool, Redruth, TR15 3RT
GAI full member
T: +44 (0)1209 212 275
www.jebsupplies.co.uk

Johan Doors Ltd
2 Beaverhall Road, Edinburgh,
EH7 4JQ
GAI affiliate member
T: +44 (0)131 235 2835
www.johandoors.co.uk



John Planck Ltd
Slip 7 Annexe, The Historic
Dockyard, Chatham, Kent,
ME4 4TZ
GAI full member
T: +44 (0)1634 829 249
www.johnplanck.co.uk

**Joinery & Construction
Supplies Ltd**
Unit C, Arran House, Business Park,
Arran Road, Perth, PH1 3DZ
GAI affiliate member
T: +44 (0)1738 587 552

JTL Architectural Hardware
Unit 2 Mercury Units, Tir Llwyd
Enterprise Park, Denbighshire,
LL18 5JZ
GAI full member
T: +44 (0)1745 610 060
www.jtlhardware.co.uk

**KAH Middle East for General
Trading Company (W.L.L)**
P.O.Box 66365, Code 43754,
Bayan, KUWAIT
GAI full member
T: +965 9724 5910
www.kah.com.kw

**KCC Door Hardware and
Security Solutions Ltd**
Unit 1, Westgate Business Park,
Ballymount, Dublin 24, IRELAND
GAI full member
T: +353 (0)1 456 7421
www.kccarchitectural.com

**Key Technologies
International Ltd**
Suite 1111, Metro Loft 38 Kwai
Hei Street Kwai Chung Northern
Territories, HONG KONG
GAI full member
T: +852 2511 4383
www.ktil.com

Keyprint Security Ltd
45 Assembly Street Edinburgh,
EH6 7BQ
GAI affiliate member
+44 (0)131 555 0909
www.keyprint.co.uk

**KICH Architectural Products
Pvt Ltd**
Gondal Road, NH-8B Vavdi, Rajkot,
360004 INDIA
GAI full member
T: +91 93 7571 3638
www.kichindia.com

Laidlaw Gulf LLC
Office 301, Mayfair Building, Dubai
Investment Park 1, PO Box 185292,
Dubai, UAE
GAI full member
T: +919 7 8089 0644
www.laidlaw.ae

Leadbeater Locks
Unit 10, Jubilee Estate, Foundry Lane,
Horsham, RH13 5UE
GAI full member
T: +44 (0)1403 264 205
www.leadbeaterlocks.com

Lincoln Security Ltd
Unit 6, Whisby Way, Lincoln,
LN6 3LQ
GAI full member
T: +44 (0)1284 762 002
www.lincolnsecurity.co.uk

**Lloyd Worrall Architectural
Solutions**
10 Fell Road, Aftercliffe, Sheffield,
S9 2AL
GAI full member
T: +44 (0)114 244 3350
www.lloydworrall.co.uk

**Lock-Tech (A Div of Swansea
Timber & Plywood)**
57-60 Oxford Street, Swansea,
SA1 3JD
GAI full member
T: +44 (0)1792 655 680
www.lock-tech.co.uk

Locks & Hardware Limited
Unit B Merrywell Business Park,
Ballymount, Dublin 12, D12RD80,
IRELAND
GAI subsidiary member
T: +353 1 419 8778
www.locksandhardware.ie

**London Architectural
Hardware Ltd**
Unit B3 Thamesview Business Centre,
Barlow Way, Rainham, Essex,
RM13 8BT
GAI full member
T: +44 (0)1245 956654
www.londonah.com

London Fire Solutions Limited
Unit 7 Glengall Business Centre,
Glengall Road, London, SE15 6NF
GAI affiliate member
T: +44 (0)20 7237 0958
www.lfsfire.co.uk

Lorient Polyproducts Ltd
Endeavour House, Fairfax Road,
Heathfield Industrial Estate,
Newton Abbot, TQ12 6UD
GAI full member
T: +44 (0)1626 834 252
www.lorientuk.com

M Brock Ltd
Wellington Road, Tharston,
Norwich, NR15 2PE
GAI affiliate member
T: +44 (0)1508 531 999
www.mbrock.co.uk

M Marcus Ltd
Unit 7, Narrow Boat Way, Dudley,
DY2 0XQ
GAI full member
T: +44 (0)1384 457 900
www.m-marcus.com

M P Smith and Co Ltd
Waterside Mill, Bank Street,
Brighouse, West Yorkshire, HD6 1BD
GAI affiliate member
T: +44 (0)1484 401 301
www.mpsmithandco.com

Macnoughton Blair Ltd
10 Falcon Road, Belfast,
BT12 6RD
GAI full member
T: +44 (0)28 9038 5363
www.macblair.com

**Mann McGowan Fabrications
Ltd**
Unit 4, Brook Trading Estate,
Deadbrook Lane, Aldershot,
GU12 4XB
GAI associate member
T: +44 (0)1252 333 601
www.mannmcgowan.co.uk

Master Locksmiths Association
1 Prospect Park, Valley Drive, Rugby,
CV21 1TF
GAI associate member
T: +44 (0)1327 262 255
www.locksmiths.co.uk

GAI MEMBERS COMPANY

Matrix Architectural Ironmongery Ltd

48 Tenter Road, Moulton Park,
Northampton, NN3 6AX

GAI full member

T: +44 (0)1604 590 330

www.matrixhardware.co.uk

Metallic Equipment Co. LLC

PO Box 117819, Sheikh Zayed Road,
Dubai, UAE

GAI affiliate member

T: +971 (0)4 380 7878

www.megroup.ae

Mid Beds Locksmiths Ltd

Unit 3c, St Francis Way, Shefford,
SG17 5DZ

GAI full member

T: +44 (0)1462 811 212

www.mblai.co.uk

Miles Architectural Ironmongery Ltd

Unit 4, Duckmoor Road Industrial
Estate, BS3 2BJ

GAI full member

T: +44 (0)117 963 9630

www.milesironmongery.co.uk

Mirka (UK) Ltd

Saxon House, Shirwell Crescent,
Furzon, Milton Keynes, MK4 1GA

GAI full member

T: +44 (0)1908 866 100

www.mirka.com

Mooney Architectural Hardware Ltd

Unit 729, Northwest Business Park,
Kilshane Drive, Ballycoolin, Dublin
15, IRELAND

GAI full member

T: +353 (0)8 7926 4343

www.mooneyai.ie

N

NAFFCO FZCO

PO Box 262169, Jebel Ali Freezone,
Dubai, UAE

GAI full member

T: +971 4815 1111

www.naffco.com

Nicholls & Clarke Building Materials Ltd

41-51 Freshwater Road, Chadwell
Heath, Romford, RM8 1SP

GAI full member

T: +44 (0)20 8586 4600

www.nichollsandclarke.com

Nico Manufacturing Ltd

109 Oxford Road, Clacton-on-Sea,
Essex, CO15 3TJ

GAI associate member

T: +44 (0)1255 422 333

www.nico.co.uk

Norman Piette

Bulwer Avenue, St Sampsons,
Guernsey, GY1 3EE

GAI full member

T: +44 (0)1481 245 801

www.norman-piette.com



Norseal Ltd

5 Regents Drive, Prudhoe,
NE42 6PX

GAI full member

T: +44 (0)1661 830 088

www.norseal.co.uk

Northern Hardware Limited

Lancashire House, Bank Top Mill,
Dixon Street, Blackburn, BB2 1TR

GAI subsidiary member

T: +44 (0)1254 680 230

www.northernhardware.co.uk

Northern Mouldings Limited T/A Heron Fit Out

69 Drum Road, Cookstown,
BT80 8QS

GAI affiliate member

T: +44 (0)28 8676 6403

www.heronfitout.com

O

Oxford Ironmongery Ltd

53 Westlands Drive, Oxford,
OX3 9QS

GAI full member

T: +44 (0)1865 247 949

www.oxfordironmongery.com

Oxley Keartland (Wholesale) Ltd

F6 - F7, Baldonnel Business Park,
Baldonnel, Roodeport 22, IRELAND

GAI associate member

T: +353 (0)1 410 5592

www.oxleyk.ie

P

Panicos Ph. Elia Ltd

56 Vasileos Pavlou Street, Limassol,
3052 CYPRUS

GAI affiliate member

T: +357 2556 0662

www.panicoselia.com

Performance Doorset Solutions Ltd

Greenvale Business Park, Todmorden
Road, Littleborough, OL15 9AZ

GAI affiliate member

T: +44 (0)1706 370 001

www.pdsdoorsets.co.uk

Perrem Design Hardware

46 & 48 Parkwest Enterprise Centre,
Parkwest Business & Industrial Park,
Nangor Road, 12 IRELAND

GAI full member

T: +353 (0)1 623 2390

www.perremhardware.com

Phoenix Sales (RJ) Ltd

Unit 14, Dagenham Business Centre,
123 Rainham Road North,
Dagenham, RM10 7FD

GAI full member

T: +44 (0)20 8819 5533

www.phoenixsalesltd.co.uk

Poole Waite & Co Ltd

3 Clerkenwell Road, London,
EC1M 5PE

GAI full member

T: +44 (0)20 7253 8117

www.poolewaite.co.uk

Powell Hardware Ltd

11 Bridge Street, Swinton,
Manchester, M27 4DU

GAI full member

T: +44 (0)161 728 9900

www.powellhardware.co.uk

Poyntell Ltd

Slaney Place, Headcorn Road,
Staplehurst, TN12 0DT

GAI full member

T: +44 (0)1580 892 902

www.poyntell.com

Preece Burford Ltd

Unit 29, Longford Ind Estate,
Longford Road, Bridgtown, Cannock,
WS11 0DG

GAI full member

T: +44 (0)1543 574 464

www.preeceburford.co.uk

Premdor Crosby Ltd

Birthwaite Business Park,
Huddersfield Road, Darton, Barnsley,
S75 5JS

GAI full member

T: +44 (0)1226 383 434

www.premdor.co.uk

Price & Oliver Ltd

Unit 9, Magreal Industrial Estate,
Freeth Street, Birmingham,
B16 0QZ

GAI full member

T: +44 (0)121 554 8491

www.priceandoliver.co.uk

Proline Sales Ltd

Unit 1, Burnside Industrial Estate,
Roebuck Road, Hainault Business
Park, Ilford, Essex, IG6 3UG

GAI full member

T: +44 (0)20 8500 2500

www.prolinesales.co.uk

GAI MEMBERS COMPANY

PWIDF Ltd

Unit B24, Langland Park West,
Langland Way, Newport,
NP19 4ED

GAI full member

T: +44 (0)1633 264 777
www.pwidf.co.uk

Q

QIC Direct

Apollo Business Parks LLP, Radcliffe
Road, Gawcott, Buckingham,
MK18 4BL

GAI associate member

T: +44 (0)1280 818950
www.qic-direct.com

R

Raygar Architectural & Engineering Supplies Ltd

Crompton Place, Centurion Way
Business Park, Alfreton Road,
DE21 4AY

GAI full member

T: +44 (0)1332 207 222
www.raygar.co.uk

Robust UK Ltd

Sutherland Road, Longton,
Stoke-on-Trent, ST3 1HZ

GAI full member

T: +44 (0)1782 592 900
www.robust-uk.com

Roundtower Hardware

The Forge, Innishannon, Co Cork,
T12 W72X, IRELAND

GAI full member

T: +353 21 477 6677
www.roundtowerlime.com

Royde & Tucker Ltd

Bilton Road, Cadwell Lane, Hitchin,
SG4 0SB

GAI full member

T: +44 (0)1462 444 444
www.ratman.co.uk

RTR Services Ltd

Unit 14b, Wakes Hall Business
Centre, Colchester Road,
Wakes Colne, CO6 2DY

GAI subsidiary member

T: +44 (0)870 242 6029
www.rtrservices.co.uk

S

SALTO Systems Ltd

Unit 1, The Court, Holywell Business
Park, Northfield Road, Southam,
CV47 0FS

GAI full member

T: +44 (0)1926 811979
www.saltosystems.com

SDS (London) Ltd

20 Weir Road, Wimbledon, London,
SW19 8UG

GAI full member

T: +44 (0)20 7228 1185
www.sdslondon.co.uk



Securefast plc

Unit 6, The Cedars Business
Centre, Avon Road, Cannock,
WS11 1QJ

GAI full member

T: +44 (0)1543 501 600
www.securefast.co.uk

Selectrite Hardware

Unit 12, Ladbroke Park Ind Est,
Millers Road, Warwick,
CV34 5AN

GAI affiliate member

T: +44 (0)1926 259 307
www.selectritehardware.com

SFD Group Ltd

Unit 2 Scotia Business Park, Scotia
Road, Stoke-on-Trent, ST6 4HG

GAI affiliate member

T: +44 (0)1782 880045
www.stokefiredoors.co.uk

SFR Recruitment Solutions

George Boole House,
D1/D2 The Point, Weaver Road,
Lincoln, LN6 3QN

GAI associate member

T: +44 (0)7512 602 431
www.sfrrecruitment.co.uk

Shield Fire, Safety & Security Ltd

Unit 3, Endeavor Drive, Basildon,
Essex, SS14 3WF

GAI affiliate member

T: +44 (0)1708 377 731
www.shieldglobal.com

Simonswerk UK Ltd

Burcot Works, Spring Street, Tipton,
DY4 8TF

GAI full member

T: +44 (0)121 522 2848
www.simonswerk.co.uk

Sitemaster Supplies Ltd

Units 1 and 2, Quidhampton
Business Units, Quidhampton,
Overton, RG25 3EB

GAI full member

T: +44 (0)118 982 0070
www.sitemastersupplies.co.uk

Slingers 1858 Limited

Paley Road, Preston, PR1 8LT

GAI full member

T: +44 (0)1772 258 235
www.slingers1858.co.uk

Spiller Door Controls T/A Door Controls Direct

1 Oxford Road, Pen Mill Trading
Estate, Yeovil, BA21 5HR

GAI full member

T: +44 (0)1935 432 929
www.spillera.co.uk

Spira Brass

Unit 7, Watery Lane Industrial Estate,
Watery Lane, Willenhall, WV13 3SU

GAI affiliate member

T: +44 (0)7448 448 916
www.spirabrass.co.uk

Strand Hardware Ltd

Strand House, Long Street, Premier
Business Park, Walsall,
WS2 9DY

GAI associate member

T: +44 (0)1922 639 111
www.strandhardware.co.uk

Strand Technologies Ltd

Strand House, Long Street, Premier
Business Park, Walsall,
WS2 9DY

GAI enterprise member

T: +44 (0)1922 332 334
www.strandtec.co.uk

Sunray Engineering Ltd

6, Kingsnorth Industrial Estate,
Wotton Road, Ashford, TN23 6LL

GAI affiliate member

T: +44 (0)1233 639 039
www.sunraydoors.co.uk

Surelock McGill Ltd

26 The Business Centre, Molly
Millars Lane, Wokingham,
RG41 2QY

GAI associate member

T: +44 (0)118 977 2525
www.surelockmcgillgroup.co

T

T&A Architectural Ironmongery Ltd

Unit 9, Gryphon Industrial Park,
Porters Wood, St Albans,
AL3 6XZ

GAI full member

T: +44 (0)1727 867 887
www.ta-architectural.co.uk

Taiwan Daedalus Door Control Co Ltd

No. 94, Section 1, Hsing Lo Road,
Tien Chung, Chang Hua, TAIWAN

GAI affiliate member

T: +886 4875 1578
www.dr-daedalus.com.tw

TGR Import & Export Ltd

41 St Clair Street, Edinburgh,
EH6 8LB

GAI full member

T: +44 (0)5601 199 236
www.tgruk.com

GAI MEMBERS COMPANY

The Fire Door Inspectors Ltd

8-11 St Johns Lane, Farringdon,
London, EC1W 4BF

GAI affiliate member
T: +44 (0)7415 784 599
www.thefdi.co.uk

The Silver Shore Trading Co LLC

P O Box 1881, Latifa Tower Block B,
5th Floor, Office 511,
Sheikh Zayed Road, Dubai, UAE

GAI full member
T: +971 (0)4 351 6667
www.silvershoreonline.com

Till & Whitehead Ltd

Eadon House, 2 Lonsdale Road,
Heaton, Bolton, BL1 4PW

GAI full member
T: +44 (0)1204 493 000
www.tillwite.com

Tindall Engineering Ltd

Unit 8, Laurel Trading Estate,
Higginshaw Lane, Royton, Oldham,
OL2 6LH

GAI subsidiary member
T: +44 (0)161 620 0666
www.mico-tindall.com

Trapex Ltd

26 Pindar Road, Hoddesdon,
EN11 0DE

GAI full member
T: +44 (0)1992 462 150
www.trapex.com

Trillium Architectural Products Ltd

52 Prince Andrew Place, North York,
M3C 2H4, CANADA

GAI full member
T: +1 416 391 5555
www.trillium.group

Tung Fat Ho Building Material Ltd

Flat B4 1/F Yip Fung Industrial
Building, 28-36 Kwai Fung Crescent,
Kwai Chung, N.T., HONG KONG

GAI full member
T: +852 2487 6199
www.tffbml.com.hk

Turentek Limited

Unit 4 Trent Gateway, Technology
Drive, Beeston Business Park,
Nottingham, NG9 1LA

GAI full member
T: +44 (0)115 970 6298
www.turentek.co.uk

U

UAP Ltd

Unit 1, Albert Close Trading Estate,
Whitefield, Manchester, M45 8EH

GAI full member
T: +44 (0)161 796 7268
www.uapcorporate.com

UL International (UK) Ltd

220 Cygnet Court, Centre Park,
Warrington, WA1 1PP

GAI associate member
T: +44 (0)1925 258 892
www.ul.com

Unico Locksmiths

183 Sheffield Road, Chesterfield,
S41 7JQ

GAI full member
T: +44 (0)1246 540833
www.unicolocksmiths.co.uk

Universal Hardware Supplies Ltd

T/A Door Décor and More, Premier
House, 227-234 Neath Road,
Landore, Swansea,
SA1 2JG

GAI affiliate member
T: +44 (0)1792 205 020
www.u-h-s.co.uk

Universal International FZCO

PO Box: 261710,
Jebel Ali Free Zone, UAE

GAI affiliate member
T: +971 (0)4 880 6266
www.uifzco.com

V

Van Cronenburg Architectural Hardware BVBA

Logboekstraat 15, Ghent, 9000
BELGIUM

GAI affiliate member
T: +32 9 336 37 34
www.vancronenburg.be

Vanquish Hardware Protection

Fusion House, Parkers Close,
Downton Business Centre, Salisbury,
SP5 3FL

GAI associate member
T: +44 (0)1725 578020
www.vanquish-hp.co.uk

Vigor Doors Limited

4 Guisley Way, Durham Lane
Industrial Park, Eaglescliffe, Stockton-
on-Tees, TS16 0RF

GAI affiliate member
T: +44 (0)1642 265034
www.vigordoors.com

Viking Hardware Ltd

Viking House, Spyvee Street, Hull,
HU8 7JJ

GAI full member
T: +44 (0)1482 221 231
www.vikinghardware.com

W

Warringtonfire Hong Kong Limited

Unit C, 18/F InfoTech Centre, 21
Hung To Road, Kowloon SAR,
HONG KONG

GAI associate member
T: +852 3586 3925
www.warringtonfire.com

Warringtonfire Testing and Certification Ltd

Rosewell House, 2A (1F) Harvest
Drive, Newbridge, Midlothian,
EH28 8QJ

GAI associate member
T: +44 (0)203 880 9520
www.exova.com

Weldit LLP

Unit 2, Finway, Luton,
LU1 1TR

GAI associate member
T: +44 (0)1582 727 840
www.welditlms.com

William Channon

45 Theobalds Road
WC1X 8SP

GAI full member
T: + (0)330 100 5313
www.williamchannon.co.uk

Winkhaus (UK) Ltd

2950 Kettering Parkway, Kettering,
NN15 6XZ

GAI full member
T: +44 (0)1536 316000
www.winkhaus.com

WT Lynn Ltd

Navigation Road, Stoke-on-Trent,
ST6 3RU

GAI full member
T: +44 (0)1782 834 818
www.wtlynn.co.uk

X,Y,Z

XL Joinery Limited

Holden Ing Way, Birstall,
WF17 9AD

GAI affiliate member
T: +44 (0)845 230 3300
www.xljoinery.co.uk

Youngs Doors Ltd

City Road Works, Norwich,
NR1 3AN

GAI full member
T: +44 (0)1603 629 889
www.youngs-doors.co.uk

Zero Seal Systems Ltd

Units 43-45, Ladford Covert,
Seighford, Stafford, ST18 9QG

GAI associate member
T: +44 (0)1785 282 910
www.zeroplus.co.uk

Zoo Hardware Ltd

Unit H, Dukes Drive, Kingmoor Park
North, Carlisle, CA6 4SH

GAI full member
+44 (0)1228 672 900
www.zoo-hardware.co.uk

RegAI DIRECTORY 2022

Every individual who attains RegAI status will be fully up-to-date with industry standards, regulations and legislation, proving their expertise and professionalism through a programme of continuing professional development.

* Directory based on 2022/23 subscription year. For the most up to date listing, please visit www.gai.org.uk.

A

Ziyad Abdul Azeez
Aqfal Trading & Services
Co W.L.L
E: md@aqfalqatar.com

Fawad Ahmad
Consort Middle East LLC
E: fawad@consortme.com

Tony Alvarez
Carlisle Brass Ltd
E: talvarez@carlislebrass.com

Mohammed Amir
George Boyd Architectural
Ironmongery & Doorsets
E: Mohamed.Amir@saint-gobain.com

Fadi Ammoun
SIMAC S.A.R.L
E: fadiammoun@gmail.com

Ganeshkumar Andavar
dormakaba Gulf Door Controls FZE
- Saudi Arabia
E: ganesh.kumar@dormakaba.com

Ray Anning
Warringtonfire Testing and
Certification Ltd
E: ray.anning@warringtonfire.com

Lorna Ardern
William Channon
E: l.ardern@ucl.ac.uk

Hanish Arora
dormakaba India Private Limited
E: hanisharora1980@yahoo.com

Karen Arthur
Frelan Hardware Ltd
E: karen.arthur13@gmail.com

Peter Ashworth
ASSA ABLOY Opening
Solutions UK & Ireland
E: peter.ashworth@assaabloy.com

Wai Tao Ben Au
Hongkong Hardware Supplier Ltd
E: ben@hkhardware.com.hk

Matthew Austin
TBKS Architectural
Ironmongery Ltd
E: matt@tbks.co.uk

Simon Ayers
SDS (London) Ltd
E: simon@sdslondon.co.uk

B

Christian Badran
Consort Middle East LLC
E: christian@consortme.com

Jeremy Ballantine
GE Door Manufacturing Ltd
E: j.h.ballantine@btinternet.com

Amanda Barcelona
E: amanda.arki@gmail.com

David Barden
John Planck Ltd
E: david.barden@johnplanck.co.uk

Jeremy Barltrop
G Johns & Sons Ltd
E: jeremy@gjohns.co.uk

Nadim Bathiche
The Silver Shore Trading Co LLC
E: n.bathiche@silvershoreonline.com

Paul Bellamy
Em-B Solutions Ltd
E: p5kb@hotmail.com

Andrew Boland
Universal Hardware Supplies Ltd
E: andrew@u-h-s.co.uk

Simon Bourne
Allgood Plc
E: simon.bourne@allgood.co.uk

Des Brady
B G Romeril & Co Ltd
E: des.brady@romerils.co.je

Jean-Louis Bramwell
Total Opening Consultants Ltd
E: jbramwell@totalopeningconsultants.com

Adam Bridges
Carlisle Brass Ltd
E: abridges@carlislebrass.com

Craig Broughton
Carlisle Brass Ltd
E: cbroughton@carlislebrass.com

Shaun Brown
ASSA ABLOY Opening
Solutions UK & Ireland
E: shaun.brown@abloy.co.uk

Roy Buckingham
Abloy UK Ltd
E: roy.buckingham@abloy.co.uk

Robert Buckley
dormakaba UK Ltd
E: robert.buckley@dormakaba.com

Nikolaos Byrne
Poole Waite & Co Ltd
E: nikbyrne87@gmail.com

C

Jessica Calpin
Unico locksmiths
E: jessica@unicolocksmiths.co.uk

Duncan Cameron
Shop 4 Handles
E: duncan@shop4handles.co.uk

Paul Campbell
Carlisle Brass Ltd
E: pcampbell@carlislebrass.com

Deborah Cannon
dormakaba UK Ltd
E: deborah.cannon@dormakaba.com

Joe Chambers
Carlisle Brass Ltd
E: jchambers@eurolite.co.uk

Kilkenny Chan
Key Technologies
International Ltd
E: kilkeny@ktil.com

Phillip Chantler
Trillium Architectural Products Ltd
E: phillip_chantler@hotmail.co.uk

Jones Cheng
dormakaba Hong Kong Limited
E: jones.cheng@dormakaba.com

Leung Chun Pong
ASSA ABLOY Hong Kong Ltd
E: thomas.leung@assaabloy.com

Paul Claydon
Ian Firth Hardware Ltd
E: paulc@ianfirth.co.uk

Stephen Clutterbuck
CES Security Solutions Ltd
E: steve@cessecurity.co.uk

REG AI INDIVIDUALS

Gary Coates
Allgood Plc
E: gary.coates@allgood.co.uk

Eliza Coffin
dormakaba UK Ltd
E: eliza.coffin@dormakaba.com

Chris Colley
John Monaghan
E: ccolley@monaghanhardware.co.uk

Jessa Comia
dormakaba Gulf Door Controls FZE -
Saudi Arabia
E: jessa.comia@dormakaba.com

Gary Cooper
Tuscan Architectural Hardware
E: gary@tuscanarc.com

Anthony Stuart Crawshaw
Powell Hardware Ltd
E: tony.crawshaw@powellhardware.co.uk

Andrew Crichton
SimonsVoss Technologies Ltd
E: andrew.crichton@allegion.com

Nigel Cronin
ASSA ABLOY Opening
Solutions UK & Ireland
E: Nigel.Cronin@assaabloy.com

D

Sharon Darby
HOPPE (UK) Ltd
E: sharon.darby@hoppe.com

Tom Davis
Carlisle Brass Ltd
E: tdavis@carlislebrass.com

Donna Davison
HOPPE (UK) Ltd
E: donna.davison@hoppe.com

Phil Dicken
Croft Architectural Hardware Ltd
E: phil.dicken@sky.com

Timothy Dies
Allgood Plc
E: timothy.dies@allgood.co.uk

John Ducey
John Planck Ltd
E: jducey@johnplanck.co.uk

E

Natalie Ebler
Turentek Limited
E: natalieebler@turentek.co.uk

Thasaphong Eurnithilert
Häfele Thailand Ltd
E: thasaphong@hafele.co.th

Nisanth Eyyani
HOPPE AG GCC
E: nisanth.eyyani@hoppe.com

F

Brian Ferguson
FD Fire Door
E: brian@fdfiredoor.co.uk

Steve Filer
Gem Security Systems Ltd
E: steve@gemsec.co.uk

Andrew Fitzgerald
Em-B Solutions Ltd
E: afitzgerald@em-b.co.uk

Cheryl Flinders
RTR Services Ltd
E: c.flinders@rttservices.co.uk

Stephen Foley
SALTO Systems Ltd
E: s.foley@saltosystems.com

Neil Furness
Access2
E: neil.furness@access2.com

G

Naveen G
dormakaba India Private Limited
E: naveen.g@dormakaba.com

Laura Glazier
Fulham Brass Ironmongery Ltd
E: Laura@fulhambrass.com

Tim Goss
Simonswerk UK Ltd
E: tim@simonswerk.co.uk

Angus Grant
Carlisle Brass Ltd
E: agrant@carlislebrass.com

David Gray
Consort Middle East LLC
E: david@consortme.com

Mitchell Griffiths
Trillium Architectural Products Ltd
E: mgriffiths.mgr@gmail.com

Jon Groom
Lloyd Worrall
E: jon.groom@lloydworrall.co.uk

Manav Gulati
dormakaba India Private Limited
E: manav.gulati@dormakaba.com

Robin Guy
Simonswerk UK Ltd
E: robin@simonswerk.co.uk

H

Amanda Haley
Ian Firth Hardware Ltd
E: amandah@ianfirth.co.uk

Barry Harris
ASSA ABLOY Opening Solutions
UK & Ireland
E: barry.harris@assaabloy.com

Samir Hassaine
Allgood Plc
E: samir.hassaine@allgood.co.uk

Dan Hawkins
Spiller Door Controls Ltd
E: dan@spillerdoorcontrol.co.uk

Lily He
dormakaba Access Solutions
(China) Ltd
E: lily.he@dormakaba.com

David Heal
Gem Security Systems Ltd
E: dave@gemsec.co.uk

Anthony Helps
HELPS
E: anthelps@gmail.com

Po Cheong Heung
Key Technologies International Ltd
E: jasonheung@ktil.com

Catherine Higgins
Em-B Solutions Ltd
E: chiggins@em-b.co.uk

Matthew Higgs
Christie Intruder Alarms Ltd
E: matth@ciaalarms.co.uk

Christopher Hill
Hafele (UK) Ltd
E: chris.hill@hafele.co.uk

Graham Hulland
dormakaba UK Ltd
E: graham.hulland@dormakaba.com

Gibran Husain
Trillium Architectural Products Ltd
E: husaingibran@gmail.com

Syed Murtaza Husaini
ASSA ABLOY Opening
Solutions Middle East
E: murtaza.husaini@assaabloy.com

John Hutchinson
Hanson & Beards Ltd
E: john.hutchinson@sky.com

Tom Hutchinson
B G Romeril & Co Ltd
E: tom.hutchinson@romerils.co.uk

J

Mohammad Fahad Anjum Jafri
ASSA ABLOY Opening
Solutions Middle East
E: fahad.jafri@assaabloy.com

Rajan Jagdev
Phoenix Sales (RJ) Ltd
E: raj@phoenixsalesltd.co.uk

Ravjit Jagdev
Phoenix Sales (RJ) Ltd
E: rav@phoenixsalesltd.co.uk

Susan James
Ironmongery Direct Ltd
E: suejames@ironmongerydirect.co.uk

Simon Jenkins
Doras Hardware
E: simon.jenkins@doras-hardware.com

Tom Jenkins
ATAJ Secure Limited
E: tom.jenkins@atajsecure.com

Yi Jin
Allegion China
E: yi.jin@allegion.com

Tony Johnson
F R Scott Limited
E: tony@frscott.co.uk

Paul Johnson
ASSA ABLOY Opening Solutions UK &
Ireland
E: pjohson@assaabloy.com

REG AI INDIVIDUALS

Matthew Jones
Lloyd Worrall
E: matthew.jones@lloydworrall.co.uk

Shayne Jones
Glutz UK Ltd
E: shayne.jones@glutz.com

Shayne Jones
E: renaissance.shayne@gmail.com

Matthew Jukes
CBS (Midlands) Ltd
E: mattjukes23@outlook.com

Steve Jukes
CBS (Midlands) Ltd
E: cbsmidlandsltd@btconnect.com

K

Insiya Kanchwala
Hafele GmbH & Co KG - Dubai
E: insiya.kanchwala@hafele.ae

Marcos Karefyllides
ES.VI.EM DECORATIONS LTD
E: info@esviem.com

Derek Kellett
Mooney Architectural Hardware Ltd
E: derek@mooneyai.ie

Mike Kelly
Häfele (UK) Ltd
E: mike.kelly@hafele.co.uk

Tabish Khan
Euro Art (Middle East) FZCO
E: tabish@euro-art.co.uk

Mark Kilbride
Leeds Doors & Cubicles
E: mark.kilbride@gmx.com

Gary King
SDS (London) Ltd
E: gary@sds london.co.uk

Mark King
Caldwell Wright Architectural
Ironmongers
E: mark_king26@hotmail.co.uk

Richard Kowalski
Stairways Midlands Ltd
E: richard.kowalski@stairways.co.uk

Ivana Kubicova
SDS (London) Ltd
E: ivana@sds london.co.uk

L

Ming Yin Lai
Key Technologies International Ltd
E: ming_yin@ymail.com

Lo Yeun Lam
Higrade Limited
E: lam@higrade.com.hk

Faye Leadbeater
Leadbeater Locks
E: faye@martinleadbeater.com

YunBum Lee
Hafele South Korea
E: juneoct19@gmail.com

Sarah Lewis
Lorient Polyproducts Ltd
E: slewis@lorientuk.com

Navneet Likhari
ASSA ABLOY India Pvt Ltd
E: navneet.likhari@assaabloy.com

Lester Lloyd Magalued
Lawrence Hardware Intl.
E: lester@lawrencehardwareintl.com

Tsy Ling Cathleen Lo
Key Technologies
International Ltd
E: cathleenl@ktil.com

Tracy Logan
Carlisle Brass Ltd
E: tlogan@carlislebrass.com

M

Ellen Mack
HOPPE (UK) Ltd
E: ellen.mack@hoppe.com

Keith Maer
E: keithmaer@gmail.com

Tsz Fung Mak
E: fm951951@gmail.com

Andrew Marshall
ASSA ABLOY Opening Solutions
New Zealand
E: andrew.marshall@assaabloy.com

Kay Mason
Proline Sales Limited
E: kay@prolinesales.co.uk

Paul Mason
Tuscan Architectural Hardware
E: paul@tuscanarc.com

Alex Massey
Carlisle Brass Ltd
E: amassey@carlislebrass.com

Douglas Masterson
Guild of Architectural Ironmongers
E: douglas.masterson@gai.org.uk

Philipose Mathews
Aqfal Trading & Services
Co W.L.L
E: philip@aqfalqatar.com

Andy Matthews
HOPPE (UK) Ltd
E: andy.mathews@hoppe.com

Kate May
Elite Architectural Ironmongery Ltd
E: kate@eliteai.co.uk

Paul McFadyen
F R Scott Limited
E: paul@frscott.co.uk

Alec McQuay
JEB Supplies Ltd
E: sales@jeb supplies.co.uk

Teresa McQuay
JEB Supplies Ltd
E: info@jeb supplies.co.uk

Gaurav Mehta
Hormann Middle East and Africa
FZE
E: gauravnmehta@gmail.com

Qing Guan Miao
E: mqgly@163.com

Ben Miller
John Planck Ltd
E: bmiller@johnplanck.co.uk

Lawrence Wong Ming Lun
Jardine Engineering Corporation Ltd
E: lawrence.wong@jec.com

Madhan Mohan Mohana Chandran
KAH Middle East for General Trading
Company (W.L.L)
E: madhanmohan1619@yahoo.com

Ian Monk
John Planck Ltd
E: imonk@johnplanck.co.uk

Desmond Mulcahy
Nico Manufacturing Ltd
E: desmulcahy1@gmail.com

N

Shariq Naseem
Euro Art (Middle East) FZCO
E: shariq.amu@gmail.com

Karen Nelson
HOPPE (UK) Ltd
E: karen.nelson@hoppe.com

Simon Nelson
Norman Piette
E: SimonNI@norman-piette.com

O

David Oake
Poynzell Limited
E: doake@poynzell.com

Lisa O'Flynn
Abloy UK Ltd
E: Lisa.O'Flynn@assaabloy.com

Debra O'Kelly
ASSA ABLOY Opening
Solutions UK & Ireland
E: debra.okelly@assaabloy.com

Conor O'Loughlin
Pacific Door Systems Limited
E: conor.o'loughlin@pacificdoors.co.nz

Kevin O'Reilly
Securefast Plc
E: kevin@securefast.co.uk

Martin Orr
Carlisle Brass Ltd
E: morr@carlislebrass.com

REG AI INDIVIDUALS

P

Heather Pace
Till & Whitehead Ltd
E: hpace@tillwite.com

Needi Venthan Palanichamy
dormakaba Gulf FZE, UAE
E: neediventhan.p@dormakaba.com

Mohan Palaniyappan
Allegion India Pvt Ltd
E: Mohan.Palaniyappan@allegion.com

Cameron Parry
Locks & Fittings Ltd
E: cam@locksandfittings.co.uk

Mark Parry
Locks & Fittings Ltd
E: markparry@locksandfittings.co.uk

Chris Paterson-Brown
TGR Import & Export Ltd
E: chris@tgr.uk.com

Matthew Pentland
Williams Ironmongery Ltd
E: matt@williams-ironmongery.co.uk

Timothy Perry
Franz Schneider Brakel GmbH
+ Co KG
E: timothy.perry@fsb.de

Lee Piper
Boss Door Controls Limited
E: lp@bossdoorcontrols.com

Tom Planck
John Planck Ltd
E: tom@johnplanck.co.uk

Sasithorn Plubpla
Hafele (Thailand) Ltd
E: sasithorn@hafele.co.th

Andrew Poffley
ASSA ABLOY Opening Solutions New Zealand
E: andrew.poffley@assaabloy.com

Tiffany Poon
ASSA ABLOY Hong Kong Ltd
E: tiffany.poon@assaabloy.com

Thalapilly Pradeep
Archms General Trading Co
W.L.L
E: pradeep.menon@archms.net

Ian Preece
Preece Burford Ltd
E: ianp@preeceburford.co.uk

Richard Pugh
John Planck Ltd
E: rpugh@johnplanck.co.uk

Pawel Pyszora
Carlisle Brass Ltd
E: ppyszora@carlislebrass.com

R

Sreejith Ramanathan
dormakaba Gulf FZE, UAE
E: sreejithramanathan@dormakaba.com

Suryaprakash Ramasamy Raja
dormakaba India Private Limited
E: suryaprakash.r@dormakaba.com

Nidhun Ramesh
E: nidhunramesh@gmail.com

Paul Renowden
JEB Supplies Ltd
E: paulren677@yahoo.co.uk

Paul Richards
Cotswold Doors Ltd
E: paulrichards@cotswolddoors.com

Stephen Richards
Hanson & Beards Ltd
E: stephen.richards@hansonandbeards.co.uk

Richard Roberts
HOPPE AG GCC
E: richard.roberts@hoppe.com

Michael Rooney
Mooney Architectural Hardware Ltd
E: michael@mooneyai.ie

Hanna Rose
HOPPE (UK) Ltd
E: hanna.rose@hoppe.com

Hollie Rowe
John Planck Ltd
E: hrowe@johnplanck.co.uk

Will Rushton
CTS Ironmongery Ltd
E: willr@ctsiromongery.co.uk

Kevin Ryan
Proline Sales Limited
E: kev@prolinesales.co.uk

S

Melina Sagardui
The Silver Shore Trading Co LLC
E: melina.sagardui@gmail.com

Shahbaz Salim
Hafele GmbH & Co KG - Dubai
E: shahbaz.Salim@hafele.ae

Pornnich Sanpawat
Hafele (Thailand) Ltd
E: pornnich@hafele.co.th

Saowanee Serm-supphakornwong
Hafele (Thailand) Ltd
E: saowanee@hafele.co.th

Shui Hong Shen
dormakaba Access Solutions (China)
Ltd
E: rain.shen@dormakaba.com

Prashanth Shetty
dormakaba Gulf Door Controls FZE -
Saudi Arabia
E: prashanth.shetty@dormakaba.com

Kanitsit Sinthuwikawong
Hafele (Thailand) Ltd
E: kanitsit.s@hafele.com

Leung Kwok (Lucas) Siu
Key Technologies
International Ltd
E: lucassiu@key-tech.co

HIGH PERFORMANCE SEALING SYSTEMS.



Lorient designs & manufactures high quality sealing systems for acoustic, smoke, fire & energy containment.

Sealing doors worldwide for over 40 years; our products are designed to save lives, preserve property; and enhance quality of life.

LORIENT

lorientuk.com

ASSA ABLOY
Part of ASSA ABLOY

REG AI INDIVIDUALS

Shabu Koodampilly Sivaraman
Hormann Middle East and
Africa FZE
E: s.koodampilly.dxb@hormann.com

Luke Slattery
Harbrine Ltd
E: luke@harbrine.co.uk

Hayley Small
Cooke Brothers Ltd
E: hayley@cookebrothers.co.uk

Frazer Smith
Ian Firth Hardware Ltd
E: frasers@ianfirth.co.uk

Natasha Smith
D Purdue & Sons (PTY) Ltd
E: natasha@cisa.co.za

Jane Snook
Lorient Polyproducts Ltd
E: jsnook@lorientuk.com

Vidyakar Soundappan
dormakaba Gulf Door Controls FZE
- Saudi Arabia
E: vidyakar.s@dorma.com

Claire Spooner
Lloyd Worrall Architectural
Solutions
E: claire.spooner@lloydworrall.co.uk

Chris Stevens
Gretsch Unitas Ltd
E: chris.stevens@g-u.co.uk

Simon Sutton
Norseal Ltd
E: simon.sutton@norseal.co.uk

Adam Sweatman
John Planck Ltd
E: asweatman@johnplanck.co.uk

Mohammed Hassan Syed
E: imran2621@gmail.com

T

Thamer Tahat
Allegion Dubai
E: t_tahat@yahoo.com

Chun Yu Tam
Tung Fat Ho Building Material Ltd
E: isaac.tam@tfhbml.com.hk

Archie Teagle
dormakaba UK Ltd
E: archie.teagle@dormakaba.com

Samantha Thatcher
SDS (London) Ltd
E: sam@sdslondon.co.uk

David Thornton
Lloyd Worrall Architectural
Solutions
E: david.thornton@lloydworrall.co.uk

David Timson
Eurobond Doors Ltd
E: dave.timson@eurobonddoors.
co.uk

Zoe Tingle
Ian Firth Hardware Ltd
E: zoet@ianfirth.co.uk

Rachel Tipton
Guild of Architectural Ironmongers
E: rachel.tipton@gai.org.uk

Jason Tonks
Zoo Hardware Ltd
E: jason.tonks@zoo-hardware.co.uk

Gordon Turner
Hafele (UK) Ltd
E: gordon.turner@hafele.co.uk

Ian Twose
GE Door Manufacturing
E: iant@gedoormanufacturing.co.uk

U,V

Stephen Upton
Premdor Crosby Ltd
E: supton@masonite.com

Bala Vignesh
ASSA ABLOY India Pvt Ltd
E: spbalavignesh@gmail.com

W

Alfred Wai
Barwin Metal Co. Ltd
E: alfredwai@barwinmetal.com.hk

Michelle Watkins
Codelocks Ltd
E: michelle.watkins@codelocks.com

Neil Webb
Norseal Ltd
E: neil.webb@norseal.co.uk

Paul White
PWIDF Ltd
E: paul@pwidf.co.uk

Garrath Willshaw
HOPPE (UK) Ltd
E: garrath.willshaw@hoppe.com

Lucy Wilson
dormakaba Americas
E: lucy.wilson@dormakaba.com

Jacqueline Nga Lai Wong
ASSA ABLOY Hong Kong Ltd
E: jacqueline.wong@assaabloy.com

James Wong
Key Technologies
International Ltd
E: jameswong@key-tech.co

Nelson Wong
dormakaba Hong Kong Limited
E: nelson.wong@dormakaba.com

Wai Ho Woo
ASSA ABLOY Hong Kong Ltd
E: Ryan.Woo@assaabloy.com

Joshua Wright
Hi-Tec Architectural Ironmongery
Ltd
E: sales@hi-tecironmongery.com

X,Y,Z

Joanne Xu
SE Asia Representative for Ian Firth
and Intelligent UK
E: sunny888999zsk@163.com

ShengLi Xu
dormakaba Access Solutions
(China) Ltd
E: charley.xu@dormakaba.com

Irene Yip
ASSA ABLOY Hong Kong Ltd
E: irene.yip@assaabloy.com

Qiu Lan (Iris) Yu
dormakaba Access Solutions
(China) Ltd
E: iris.yu@dormakaba.com



FORZA

FIRE & SECURITY DOORSETS

In addition to bespoke door and frame assemblies supplied to the UK commercial interiors market, Forza manufactures a range of dual certification fire and security doorsets for hotel and premium residential apartment projects.

Learn more at forza-doors.com or call us on **01403 711126**



Features and quality beyond
standard. Every type, every size,
every finish.

The right lock for every application.

